

KHSRP (E2E2U) Rabbit mAb



Orders ■ 877-616-CELL (2355)
orders@cellsignal.com
Support ■ 877-678-TECH (8324)
info@cellsignal.com
Web ■ www.cellsignal.com

New 10/13

For Research Use Only. Not For Use In Diagnostic Procedures.

Entrez Gene ID #8570
UniProt ID #Q92945

Applications W, IP Endogenous	Species Cross-Reactivity* H, M, R, Mk	Molecular Wt. 82 kDa	Isotype Rabbit IgG**
-------------------------------------	--	-------------------------	-------------------------

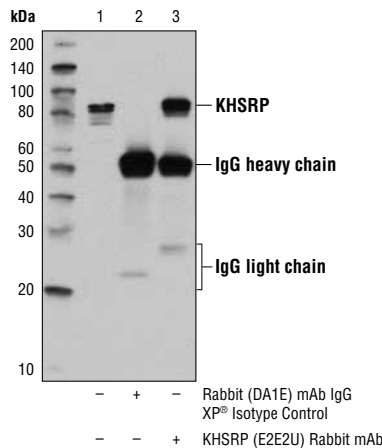
Background: KHSRP, also known as KSRP, is a KH domain-containing AU-rich element (ARE) binding protein (1). It recruits degradation machinery and activates mRNA turnover (2). This protein was previously shown to function as a regulator for splicing (3). KHSRP associates with both the Drosha and Dicer multiprotein complexes (4), and controls the biogenesis of some microRNAs by binding to the terminal loops of these microRNA precursors (3). KHSRP is found in neural and non-neural cell types in both the nucleus and the cytoplasm (4).

Specificity/Sensitivity: KHSRP (E2E2U) Rabbit mAb recognizes endogenous levels of total KHSRP protein.

Source/Purification: Monoclonal antibody is produced by immunizing animals with a synthetic peptide corresponding to residues surrounding Val78 of human KHSRP protein.

Background References:

- (1) Gherzi, R. et al. (2006) *PLoS Biol* 5, e5.
- (2) Gherzi, R. et al. (2004) *Mol Cell* 14, 571-83.
- (3) Min, H. et al. (1997) *Genes Dev* 11, 1023-36.
- (4) Trabucchi, M. et al. (2009) *Nature* 459, 1010-4.



Immunoprecipitation of KHSRP from HeLa cell extracts using Rabbit (DA1E) mAb IgG XP[®] #3900 (Lane 2) or KHSRP (E2E2U) Rabbit mAb (Lane 3). Lane 1 is 10% input. Western blot analysis was performed using KHSRP (E2E2U) Rabbit mAb.

Storage: Supplied in 10 mM sodium HEPES (pH 7.5), 150 mM NaCl, 100 µg/ml BSA, 50% glycerol and less than 0.02% sodium azide. Store at -20°C. Do not aliquot the antibody.

*Species cross-reactivity is determined by western blot.

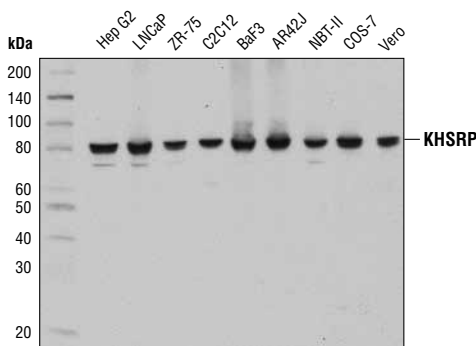
**Anti-rabbit secondary antibodies must be used to detect this antibody.

Recommended Antibody Dilutions:

Western blotting	1:1000
Immunoprecipitation	1:50

For product specific protocols please see the web page for this product at www.cellsignal.com.

Please visit www.cellsignal.com for a complete listing of recommended companion products.



Western blot analysis of extracts from various cell lines using KHSRP (E2E2U) Rabbit mAb.

IMPORTANT: For western blots, incubate membrane with diluted antibody in 5% w/v BSA, 1X TBS, 0.1% Tween[®] 20 at 4°C with gentle shaking, overnight.

Tween[®] is a registered trademark of ICI Americas, Inc.

Applications Key: W—Western IP—Immunoprecipitation IHC—Immunohistochemistry ChIP—Chromatin Immunoprecipitation IF—Immunofluorescence F—Flow cytometry E-P—ELISA-Peptide
Species Cross-Reactivity Key: H—human M—mouse R—rat Hm—hamster Mk—monkey Mi—mink C—chicken Dm—D. melanogaster X—Xenopus Z—zebrafish B—bovine
Dg—dog Pg—pig Sc—S. cerevisiae Ce—C. elegans Hr—horse All—all species expected Species enclosed in parentheses are predicted to react based on 100% homology.