

#13344 Store at -20°C

Myelin Basic Protein (2H9) Mouse mAb



Orders ■ 877-616-CELL (2355)
orders@cellsignal.com

Support ■ 877-678-TECH (8324)
info@cellsignal.com

Web ■ www.cellsignal.com

New 11/13

For Research Use Only. Not For Use In Diagnostic Procedures.

Entrez Gene ID #4155
UniProt ID #P02686

Applications W Endogenous	Species Cross-Reactivity* H, M, R	Molecular Wt. 12-18 kDa	Isotype Mouse IgG1
---------------------------------	--------------------------------------	----------------------------	-----------------------

Storage: Supplied in 10 mM sodium HEPES (pH 7.5), 150 mM NaCl, 100 µg/ml BSA, 50% glycerol and less than 0.02% sodium azide. Store at -20°C. Do not aliquot the antibody.

***Species cross-reactivity is determined by western blot.**

Recommended Antibody Dilutions:

Western blotting 1:1000

For product specific protocols please see the web page for this product at www.cellsignal.com.

Please visit www.cellsignal.com for a complete listing of recommended companion products.

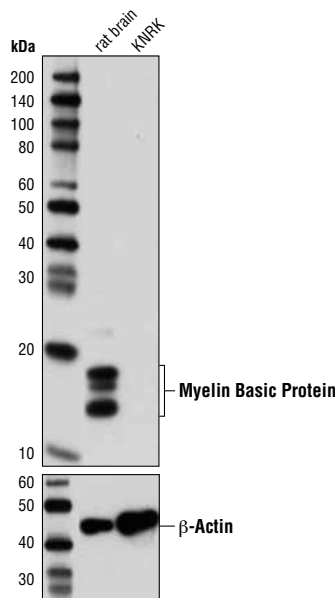
Background: Myelin basic protein (MBP) is an abundant central nervous system (CNS) myelin membrane protein that plays an important role in nerve myelination. Myelin sheaths are multi-layered membranes derived from oligodendrocytes that increase the conduction velocity of axonal impulses. MBP helps to adhere the cytoplasmic leaflets of adjacent oligodendrocyte membranes to one another. Several splice variants of MBP are expressed in cells and the protein is modified following translation (i.e. phosphorylation, methylation), which suggests additional membrane adhesion functions (1).

Specificity/Sensitivity: Myelin Basic Protein (2H9) Mouse mAb recognizes endogenous levels of total myelin basic protein.

Source/Purification: Monoclonal antibody is produced by immunizing animals with recombinant protein specific to human myelin basic protein.

Background References:

(1) Harauz, G. and Boggs, J.M. (2013) *J Neurochem* 125, 334-61.



Western blot analysis of extracts from rat brain and KNRK cells using Myelin Basic Protein (2H9) Mouse mAb (upper) or beta-Actin (D6A8) Rabbit mAb #8457 (lower).

IMPORTANT: For western blots, incubate membrane with diluted antibody in 5% w/v nonfat dry milk, 1X TBS, 0.1% Tween® 20 at 4°C with gentle shaking, overnight.

Tween® is a registered trademark of ICI Americas, Inc.

© 2013 Cell Signaling Technology, Inc. Cell Signaling Technology® is a trademark of Cell Signaling Technology, Inc.

Applications Key: W—Western IP—Immunoprecipitation IHC—Immunohistochemistry ChIP—Chromatin Immunoprecipitation IF—Immunofluorescence F—Flow cytometry E-P—ELISA—Peptide
Species Cross-Reactivity Key: H—human M—mouse R—rat Hm—hamster Mk—monkey Mi—mink C—chicken Dm—D. melanogaster X—Xenopus Z—zebrafish B—bovine
 Dg—dog Pg—pig Sc—S. cerevisiae Ce—C. elegans Hr—horse All—all species expected Species enclosed in parentheses are predicted to react based on 100% homology.