

# AFAP1L2/XB130 (D4A5) Rabbit mAb



**Orders** ■ 877-616-CELL (2355)  
orders@cellsignal.com

**Support** ■ 877-678-TECH (8324)  
info@cellsignal.com

**Web** ■ www.cellsignal.com

rev. 06/29/16

**For Research Use Only. Not For Use In Diagnostic Procedures.**

Applications W, IP Endogenous	Species Cross-Reactivity* H, Mk	Molecular Wt. 130 kDa	Isotype Rabbit IgG**
-------------------------------------	------------------------------------	--------------------------	-------------------------

**Background:** The actin-filament associated protein (AFAP) family consists of AFAP1, AFAP1L1, and AFAP1L2/XB130, a group of structurally similar proteins that play distinct roles in the regulation of cytoskeletal dynamics and signal transduction. Actin filament-associated protein 1-like 2 (AFAP1L2, XB130) is an adaptor protein that regulates signaling downstream of multiple kinases, including Src, Akt, and the thyroid specific kinase RET/PTC (1-3). Through these pathways, AFAP1L2/XB130 mediates transcriptional regulation, cell proliferation, motility, and microRNA expression (4,5). Research has shown that AFAP1L2/XB130 is involved in the proliferation and survival of thyroid tumor cells (6), and may have value in gastric cancer prognosis (7).

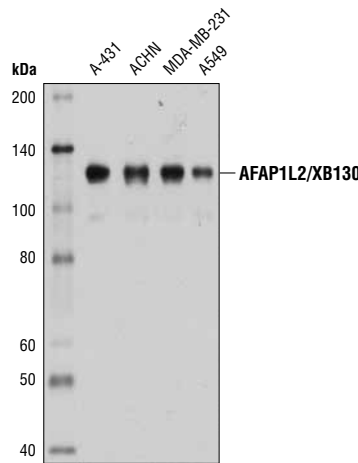
**Specificity/Sensitivity:** AFAP1L2/XB130 (D4A5) Rabbit mAb recognizes endogenous levels of total AFAP1L2/XB130 protein.

**Source/Purification:** Monoclonal antibody is produced by immunizing animals with a synthetic peptide corresponding to residues surrounding Val391 of human AFAP1L2/XB130 protein.

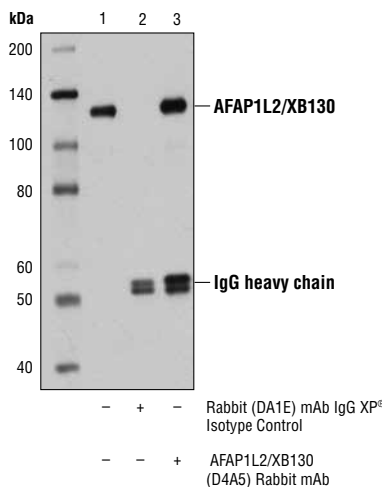
**Background References:**

- (1) Xu, J. et al. (2007) *J Biol Chem* 282, 16401-12.
- (2) Shiozaki, A. et al. (2012) *PLoS One* 7, e43646.
- (3) Lodyga, M. et al. (2009) *Oncogene* 28, 937-49.
- (4) Lodyga, M. et al. (2010) *J Cell Sci* 123, 4156-69.
- (5) Takeshita, H. et al. (2013) *PLoS One* 8, e59057.
- (6) Shiozaki, A. et al. (2011) *Am J Pathol* 178, 391-401.
- (7) Shi, M. et al. (2012) *PLoS One* 7, e41660.

**Immunoprecipitation of AFAP1L2/XB130 from A-431 cell extracts using Rabbit (DA1E) mAb IgG XP® Isotype Control #3900 (lane 2) or AFAP1L2/XB130 (D4A5) Rabbit mAb (lane 3). Lane 1 is 10% input. Western blot was performed using AFAP1L2/XB130 (D4A5) Rabbit mAb.**



Western Blot analysis of extracts from various cell types using AFAP1L2/XB130 (D4A5) Rabbit mAb.



**IMPORTANT: For western blots, incubate membrane with diluted antibody in 5% w/v BSA, 1X TBS, 0.1% Tween-20 at 4°C with gentle shaking, overnight.**

Entrez Gene ID #84632  
UniProt ID #Q8N4X5

**Storage:** Supplied in 10 mM sodium HEPES (pH 7.5), 150 mM NaCl, 100 µg/ml BSA, 50% glycerol and less than 0.02% sodium azide. Store at -20°C. Do not aliquot the antibody.

**\*Species cross-reactivity is determined by western blot.**

**\*\*Anti-rabbit secondary antibodies must be used to detect this antibody.**

**Recommended Antibody Dilutions:**

Western blotting 1:1000  
Immunoprecipitation 1:50

**For product specific protocols please see the web page for this product at www.cellsignal.com.**

**Please visit www.cellsignal.com for a complete listing of recommended complementary products.**