

#12602 Store at 4°C

Cleaved Caspase-8 (Asp391) (18C8) Rabbit mAb (PE Conjugate)

www.cellsignal.com

Support: 877-678-TECH (8324)
www.cellsignal.com/support

Orders: 877-616-CELL (2355)
orders@cellsignal.com

Entrez-Gene ID #841
UniProt ID #Q14790

rev. 04/18/18

For Research Use Only. Not For Use In Diagnostic Procedures.

Applications	Species Cross-Reactivity	Isotype
F	H	Rabbit IgG
Endogenous		

Description: This Cell Signaling Technology antibody is conjugated to phycoerythrin (PE) and tested in-house for direct flow cytometry analysis in human cells. The antibody is expected to exhibit the same species cross-reactivity as the unconjugated Cleaved Caspase-8 (Asp391) (18C8) Rabbit mAb #9496.

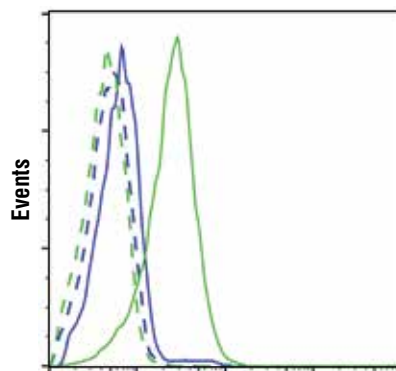
Background: Apoptosis induced through the CD95 receptor (Fas/APO-1) and tumor necrosis factor receptor 1 (TNFR1) activates caspase-8 and leads to the release of the caspase-8 active fragments, p18 and p10 (1-3). Activated caspase-8 cleaves and activates downstream effector caspases such as caspase-1, -3, -6, and -7. Caspase-3 ultimately elicits the morphological hallmarks of apoptosis, including DNA fragmentation and cell shrinkage.

Specificity/Sensitivity: Cleaved Caspase-8 (Asp391) (18C8) Rabbit mAb (PE Conjugate) recognizes human caspase-8 when cleaved at Asp391 (isoform A, Asp374 on isoform B). This antibody detects cleavage products containing the pro-domain with the p18 subunit, as well as the p18 subunit alone.

Source/Purification: Monoclonal antibody is produced by immunizing animals with a synthetic peptide corresponding to residues adjacent to Asp391 of human caspase-8 protein.

Background References:

- (1) Muzio, M. et al. (1996) *Cell* 85, 817-27.
- (2) Boldin, M.P. et al. (1996) *Cell* 85, 803-15.
- (3) Fernandes-Alnemri, T. et al. (1996) *Proc Natl Acad Sci USA* 93, 7464-9.



Cleaved Caspase-8 (Asp391) (PE Conjugate)

Flow cytometric analysis of Jurkat cells, untreated (blue) or treated with Etoposide (25uM, ON; green) using Cleaved Caspase-8 (Asp391) (18C8) Rabbit mAb (PE conjugate) (solid lines) or concentration-matched Rabbit (DA1E) mAb IgG XP® Isotype Control (PE Conjugate) #5742 (dashed lines).

Storage: Supplied in PBS (pH 7.2), less than 0.1% sodium azide and 2 mg/ml BSA. Store at 4°C. Do not aliquot the antibodies. Protect from light. Do not freeze.

Recommended Antibody Dilutions:

Flow Cytometry 1:50

For product specific protocols and a complete listing of recommended companion products please see the product web page at www.cellsignal.com

U. S. Patent No. 5,675,063

Thank you for your recent purchase. If you would like to provide a review visit www.cellsignal.com/comments.