

EML4 (D5V6M) Rabbit mAb



Orders ■ 877-616-CELL (2355)
orders@cellsignal.com

Support ■ 877-678-TECH (8324)
info@cellsignal.com

Web ■ www.cellsignal.com

rev. 05/19/16

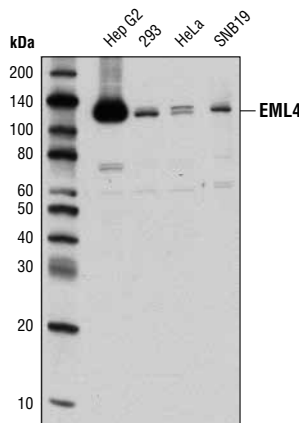
For Research Use Only. Not For Use In Diagnostic Procedures.

Applications W, IP, IHC-P Endogenous	Species Cross-Reactivity* H, M, R, Mk	Molecular Wt. 120 kDa	Isotype Rabbit IgG**
--	--	--------------------------	-------------------------

Background: Echinoderm microtubule-associated protein-like 4 (EML4) is a 120 kDa microtubule-associated WD-repeat protein of the echinoderm microtubule-associated protein family (1). The expression of EML4 is necessary for correct intracellular microtubule network formation (2). EML4 protein expression is upregulated during mitosis and downregulated during the remaining cell cycle (1). During mitosis, EML4 is heavily phosphorylated and is associated with the mitotic spindle (2). The amino-terminal segment of EML4 is essential for microtubule association and function.

Specificity/Sensitivity: EML4 (D5V6M) Rabbit mAb recognizes endogenous levels of total EML4 protein.

Source/Purification: Monoclonal antibody is produced by immunizing animals with a synthetic peptide corresponding to residues surrounding Asn165 of human EML4 protein.



Western blot analysis of extracts from various cell lines using EML4 (D5V6M) Rabbit mAb.

Entrez Gene ID #27436
UniProt ID #Q9HC35

Storage: Supplied in 10 mM sodium HEPES (pH 7.5), 150 mM NaCl, 100 µg/ml BSA, 50% glycerol and less than 0.02% sodium azide. Store at -20°C. Do not aliquot the antibody.

***Species cross-reactivity is determined by western blot.**

****Anti-rabbit secondary antibodies must be used to detect this antibody.**

Recommended Antibody Dilutions:

Western blotting 1:1000
Immunoprecipitation 1:100
Immunohistochemistry (Paraffin) 1:2000†

Unmasking buffer: Citrate
Antibody diluent: SignalStain® Antibody Diluent #8112

Detection reagent: SignalStain® Boost (HRP, Rabbit) #8114

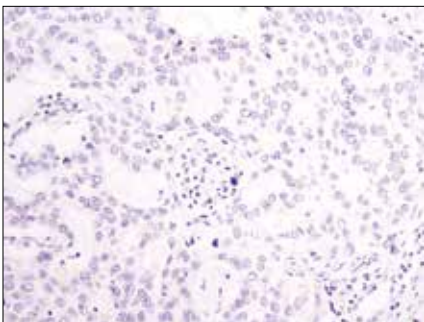
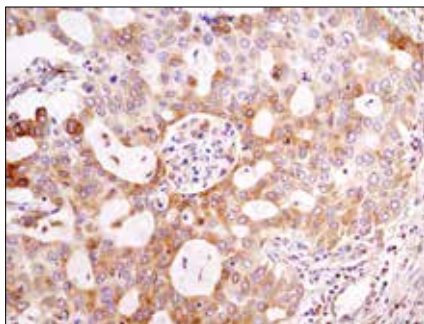
†Optimal IHC dilutions determined using SignalStain® Boost IHC Detection Reagent.

For product specific protocols please see the web page for this product at www.cellsignal.com.

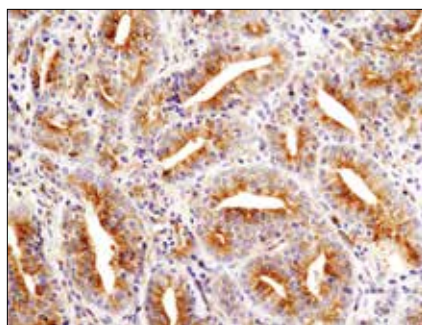
Please visit www.cellsignal.com for a complete listing of recommended complementary products.

Background References:

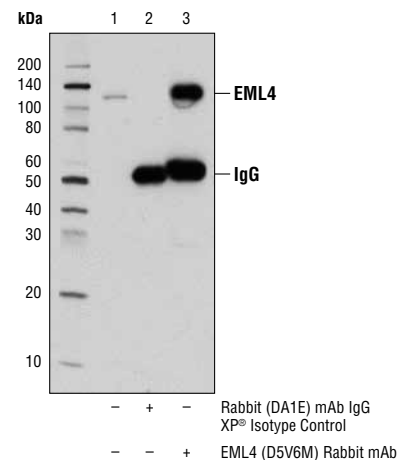
- (1) Heidebrecht, H.J. et al. (2000) *Genomics* 68, 348-350.
- (2) Pollmann, M. et al. (2006) *Exp. Cell Res.* 312, 3241-3251.



Immunohistochemical analysis of paraffin-embedded human lung carcinoma using EML4 (D5V6M) Rabbit mAb in the presence of control peptide (upper) or antigen-specific peptide (lower).



Immunohistochemical analysis of paraffin-embedded human prostate carcinoma using EML4 (D5V6M) Rabbit mAb.



Immunoprecipitation of EML4 from 293 cell extracts using Rabbit (DA1E) mAb IgG XP® Isotype Control #3900 (lane 2) or EML4 (D5V6M) Rabbit mAb (lane 3). Lane 1 is 10% input. Western blot analysis was performed using EML4 (D5V6M) Rabbit mAb.

IMPORTANT: For western blots, incubate membrane with diluted antibody in 5% w/v BSA, 1X TBS, 0.1% Tween-20 at 4°C with gentle shaking, overnight.