

Store at
-20°C

#11988

HES1 (D6P2U) Rabbit mAb

www.cellsignal.com

Support: 877-678-TECH (8324)
info@cellsignal.comOrders: 877-616-CELL (2355)
orders@cellsignal.comEntrez-Gene ID #3280
UniProt ID #Q14469

rev. 05/12/16

For Research Use Only. Not For Use In Diagnostic Procedures.**Applications**
W, IP, IHC-P
Endogenous**Species Cross-Reactivity***
H, M, R, Mk**Molecular Wt.**
30 kDa**Isotype**
Rabbit IgG**

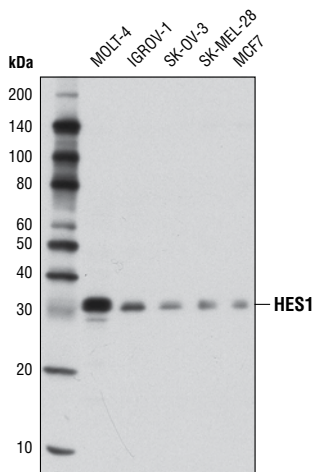
Background: HES1 (Hairy and Enhancer of Split 1) is one of seven members of the HES family of basic helix-loop-helix (bHLH) transcription factors which function primarily to repress transcription of bHLH-dependent genes (1). HES1 is understood to play an important conserved role in maintaining pluripotency of embryonic and adult stem/progenitor cells via the transcriptional repression of genes that promote differentiation (1,2). HES1 is particularly well known as a repressive mediator of the canonical Notch signaling pathway (3). HES1 plays a key role in mediating Notch-dependent T cell lineage commitment (4), and has been reported to be an essential mediator of Notch-induced T cell acute lymphoblastic leukemia (T-ALL) (4,5). HES1 is also reported to mediate Notch-induced repression of differentiation in a number of cancer cell types. A conditional deletion of HES1 from intestinal tumor cells in APC-mutant mice reduced tumor cell proliferation, while promoting differentiation toward epithelial lineages (6). Overexpression of HES1 in a human osteosarcoma (OS) cell line was shown to repress expression of the Notch antagonist *Dtx1*, leading to increased OS cell invasiveness (7). Other genes subject to transcriptional repression by HES1 include *Neurogenin-2*, *Math1/Atoh1* and the NOTCH ligands *DLL1* and *Jagged1* (6,8,9).

Specificity/Sensitivity: HES1 (D6P2U) Rabbit mAb recognizes endogenous levels of total HES1 protein.

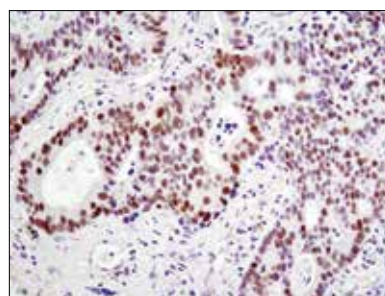
Source/Purification: Monoclonal antibody is produced by immunizing animals with recombinant protein specific to human HES1 protein.

Background References:

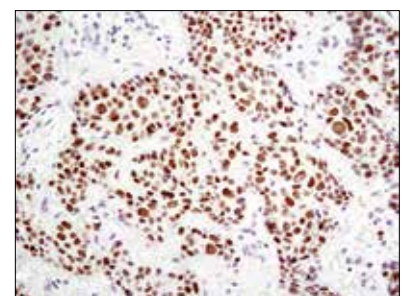
- (1) Kageyama, R. et al. (2007) *Development* 134, 1243-51.
- (2) Hatakeyama, J. et al. (2004) *Development* 131, 5539-50.
- (3) Kobayashi, T. and Kageyama, R. (2010) *Genes Cells* 15, 689-98.
- (4) Wendorff, A.A. et al. (2010) *Immunity* 33, 671-84.
- (5) Espinosa, L. et al. (2010) *Cancer Cell* 18, 268-81.
- (6) Ueo, T. et al. (2012) *Development* 139, 1071-82.
- (7) Zhang, P. et al. (2010) *Oncogene* 29, 2916-26.
- (8) Kageyama, R. et al. (2008) *Dev Growth Differ* 50 Suppl 1, S97-103.
- (9) Kobayashi, T. et al. (2009) *Genes Dev* 23, 1870-5.



Western blot analysis of extracts from various cell lines using HES1 (D6P2U) Rabbit mAb.



Immunohistochemical analysis of paraffin-embedded human lung carcinoma using HES1 (D6P2U) Rabbit mAb.



Immunohistochemical analysis of paraffin-embedded human breast carcinoma using HES1 (D6P2U) Rabbit mAb.

Storage: Supplied in 10 mM sodium HEPES (pH 7.5), 150 mM NaCl, 100 µg/ml BSA, 50% glycerol and less than 0.02% sodium azide. Store at -20°C. Do not aliquot the antibody.

*Species cross-reactivity is determined by western blot.

**Anti-rabbit secondary antibodies must be used to detect this antibody.

Recommended Antibody Dilutions:

Western blotting	1:1000
Immunoprecipitation	1:200
Immunohistochemistry (Paraffin)	1:6400†
Unmasking buffer:	Citrate
Antibody diluent:	SignalStain® Antibody Diluent #8112
Detection reagent:	SignalStain® Boost (HRP, Rabbit) #8114
†Optimal IHC dilutions determined using SignalStain® Boost IHC Detection Reagent.	

For product specific protocols and a complete listing of recommended companion products please see the product web page at www.cellsignal.com

Tween® is a registered trademark of ICI Americas, Inc.

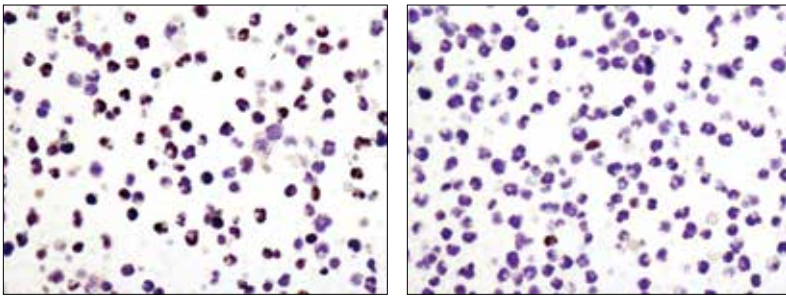
IMPORTANT: For western blots, incubate membrane with diluted antibody in 5% w/v BSA, 1X TBS, 0.1% Tween®20 at 4°C with gentle shaking, overnight.

© 2014 Cell Signaling Technology, Inc.
SignalStain® and Cell Signaling Technology® are trademarks of Cell Signaling Technology, Inc.

Thank you for your recent purchase. If you would like to provide a review visit www.cellsignal.com/comments.



Applications: W—Western IP—Immunoprecipitation IHC—Immunohistochemistry ChIP—Chromatin Immunoprecipitation IF—Immunofluorescence F—Flow cytometry E-P—ELISA-Peptide Species Cross-Reactivity: H—human M—mouse R—rat Hm—hamster Mk—monkey Mi—mink C—chicken Dm—D. melanogaster X—Xenopus Z—zebrafish B—bovine Dg—dog Pg—pig Sc—S. cerevisiae Ce—C. elegans Hr—Horse All—all species expected *Species enclosed in parentheses are predicted to react based on 100% homology.



Immunohistochemical analysis of paraffin-embedded CUTTL1 cell pellets, control (left) or Compound E-treated (right), using HES1 (D6P2U) Rabbit mAb.