

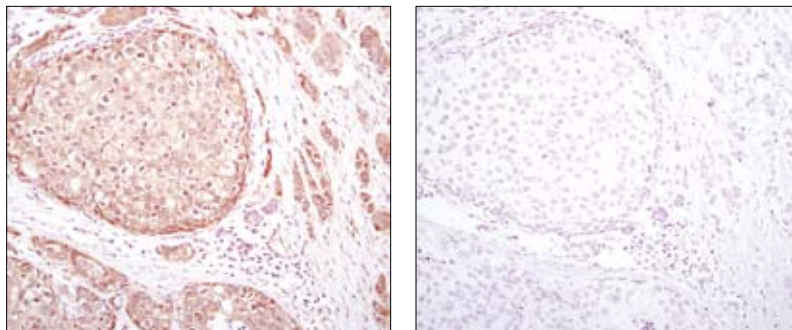
# Akt2 Blocking Peptide (IHC Specific)

✓ 100 µg

**Orders** ■ 877-616-CELL (2355)  
orders@cellsignal.com  
**Support** ■ 877-678-TECH (8324)  
info@cellsignal.com  
**Web** ■ www.cellsignal.com

rev. 02/22/10

This product is intended for research purposes only. This product is not intended to be used for therapeutic or diagnostic purposes in humans or animals.



Immunohistochemical analysis of paraffin-embedded human breast carcinoma using Akt (pan) (C67E7) Rabbit mAb in the presence of control peptide (left) or Akt (pan) Blocking Peptide #1085 (right).

**Background:** Akt, also referred to as PKB or Rac, plays a critical role in controlling survival and apoptosis (1-3). This protein kinase is activated by insulin and various growth and survival factors to function in a wortmannin-sensitive pathway involving PI3 kinase (2,3). Akt is activated by phospholipid binding and activation loop phosphorylation at Thr308 by PDK1 (4) and by phosphorylation within the carboxy terminus at Ser473. The previously elusive PDK2 responsible for phosphorylation of Akt at Ser473 has been identified as mammalian target of rapamycin (mTor) in a rapamycin-insensitive complex with rictor and Sin1 (5,6). Akt promotes cell survival by inhibiting apoptosis by phosphorylating and inactivating several targets, including Bad (7), forkhead transcription factors (8), c-Raf (9) and caspase-9. PTEN phosphatase is a major negative regulator of the PI3 kinase/Akt signaling pathway (10). LY294002 is a specific PI3 kinase inhibitor (11).

Another essential Akt function is the regulation of glycogen synthesis through phosphorylation and inactivation of GSK-3α and β (12,13). Akt may also play a role in insulin stimulation of glucose transport (12).

In addition to its role in survival and glycogen synthesis, Akt is involved in cell cycle regulation by preventing GSK-3β mediated phosphorylation and degradation of cyclin D1 (14) and by negatively regulating the cyclin dependent kinase inhibitors p27 Kip (15) and p21 Waf1 (16). Akt also plays a critical role in cell growth by directly phosphorylating mTOR in a rapamycin-sensitive complex containing raptor (17). More importantly, Akt phosphorylates and inactivates tuberlin (TSC2), an inhibitor of mTOR within the mTOR-raptor complex (18). Inhibition of mTOR stops the protein synthesis machinery due to inactivation of its effector, p70 S6 kinase and activation of the eukaryotic initiation factor 4E binding protein 1 (4E-EP1), an inhibitor of translation (18,19).

**Description:** This peptide can be used to block Akt2 (54G8) Rabbit mAb (IHC Specific) #4057.

**Quality Control:** The quality of the peptide was evaluated by reversed-phase HPLC and by mass spectrometry. The peptide blocks Akt (pan) (C67E7) Rabbit mAb #4691 and Akt (pan) (11E7) by immunohistochemistry. It also blocks signal from Akt (pan) antibodies #4691 and #4685 in Western blotting.

**Applications:** Use as a blocking reagent to evaluate the specificity of antibody reactivity in western immunoblotting and immunohistochemistry protocols.

**Directions for Use:** For immunohistochemistry, add twice the volume of peptide as volume of antibody used in 100 µl total volume. Incubate for a minimum of 30 minutes prior to adding the entire volume to the slide. Recommended antibody dilutions can be found on the product data sheet.

For western immunoblotting, add 10 µl of antibody and 10 µl of blocking peptide to 10 ml of antibody dilution buffer, and incubate at room temperature for 30 minutes before allowing to react with the blot.

Entrez-Gene ID # 208  
Swiss-Prot Acc. # P31751

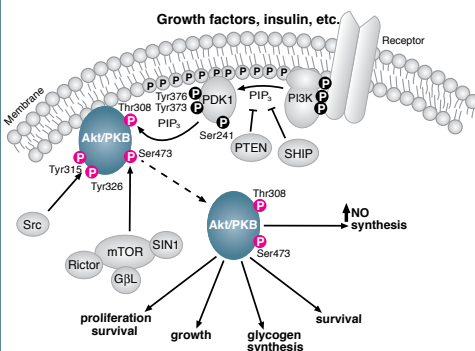
**Storage:** Supplied in 20 mM potassium phosphate (pH 7.0), 50 mM NaCl, 0.1 mM EDTA, 1 mg/ml BSA and 5% glycerol. Store at -20°C.

For application specific protocols please see the web page for this product at [www.cellsignal.com](http://www.cellsignal.com).

Please visit [www.cellsignal.com](http://www.cellsignal.com) for a complete listing of recommended companion products.

**Background References:**

- (1) Franke, T.F. et al. (1997) *Cell* 88, 435-7.
- (2) Burgering, B.M. and Coffey, P.J. (1995) *Nature* 376, 599-602.
- (3) Franke, T.F. et al. (1995) *Cell* 81, 727-36.
- (4) Alessi, D.R. et al. (1996) *EMBO J* 15, 6541-51.
- (5) Sarbassov, D.D. et al. (2005) *Science* 307, 1098-101.
- (6) Jacinto, E. et al. (2006) *Cell* 127, 125-37.
- (7) Cardone, M.H. et al. (1998) *Science* 282, 1318-21.
- (8) Brunet, A. et al. (1999) *Cell* 96, 857-68.
- (9) Zimmermann, S. and Moelling, K. (1999) *Science* 286, 1741-4.
- (10) Cantley, L.C. and Neel, B.G. (1999) *Proc Natl Acad Sci USA* 96, 4240-5.
- (11) Vlahos, C.J. et al. (1994) *J Biol Chem* 269, 5241-8.
- (12) Hajduch, E. et al. (2001) *FEBS Lett* 492, 199-203.
- (13) Cross, D.A. et al. (1995) *Nature* 378, 785-9.
- (14) Diehl, J.A. et al. (1998) *Genes Dev* 12, 3499-511.
- (15) Gesbert, F. et al. (2000) *J Biol Chem* 275, 39223-30.
- (16) Zhou, B.P. et al. (2001) *Nat Cell Biol* 3, 245-52.
- (17) Navé, B.T. et al. (1999) *Biochem J* 344 Pt 2, 427-31.
- (18) Inoki, K. et al. (2002) *Nat Cell Biol* 4, 648-57.
- (19) Manning, B.D. et al. (2002) *Mol Cell* 10, 151-62.



**Applications Key:** W—Western IP—Immunoprecipitation IHC—Immunohistochemistry ChIP—Chromatin Immunoprecipitation IF—Immunofluorescence F—Flow cytometry E-P—ELISA-Peptide  
**Species Cross-Reactivity Key:** H—human M—mouse R—rat Hm—hamster Mk—monkey Mi—mink C—chicken Dm—D. melanogaster X—Xenopus Z—zebrafish B—bovine  
Dg—dog Pg—pig Sc—S. cerevisiae Ce—C. elegans Hr—Horse All—all species expected Species enclosed in parentheses are predicted to react based on 100% homology.