

Apoptosis Marker: Cleaved Caspase-3 (Asp175) Western Detection Kit

✓ 1 Kit
(10 western blots)



Orders ■ 877-616-CELL (2355)
orders@cellsignal.com
Support ■ 877-678-TECH (8324)
info@cellsignal.com
Web ■ www.cellsignal.com

rev. 04/22/16

For Research Use Only. Not For Use In Diagnostic Procedures.

Products Included	Product #	Quantity	Mol. Wt.	Isotype
Cleaved Caspase-3 (Asp175) (5A1E) Rabbit mAb	9664	100 µl	17, 19 kDa	Rabbit IgG
Caspase-3 Antibody	9662	100 µl	17, 19, 35 kDa	Rabbit IgG
Caspase-3 Control Cell Extracts	9663	100 µl		
Biotinylated Protein Ladder	7727	100 µl		
20X LumiGLO® Reagent and 20X Peroxide	7003	5 ml each		
Anti-rabbit IgG, HRP-linked Antibody	7074	100 µl		Goat
Anti-biotin, HRP-linked Antibody	7075	100 µl		Goat

See www.cellsignal.com for individual component applications, species cross-reactivity, dilutions and additional application protocols.

Description: Apoptosis Marker: Cleaved Caspase-3 (Asp175) Western Detection Kit offers an efficient way of detecting caspase-3 processing and activation by Western blotting. The kit contains enough primary and secondary antibodies to perform 10 Western mini blots, as well as a set of pre-stained and biotinylated markers, cell lysates and LumiGLO® reagent.

Background: Caspase-3 (CPP-32, Apoptain, Yama, SCA-1) is a critical executioner of apoptosis, as it is either partially or totally responsible for the proteolytic cleavage of many key proteins such as the nuclear enzyme poly (ADP-ribose) polymerase (PARP) (1). Activation of caspase-3 requires proteolytic processing of its inactive zymogen into activated p17 and p12 fragments. Cleavage of caspase-3 requires aspartic acid at the P1 position (2).

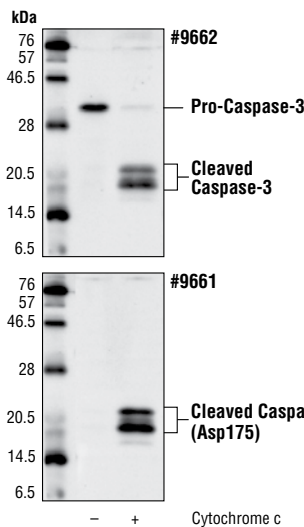
Specificity/Sensitivity: Cleaved Caspase-3 (Asp175) Antibody detects endogenous levels of the large fragment (17/19 kDa) of activated caspase-3 resulting from cleavage adjacent to (Asp175). This antibody does not recognize full length caspase-3 or other cleaved caspases. Caspase-3 Antibody detects endogenous levels of full length caspase-3 (35 kDa) and the large fragment of caspase-3 resulting from cleavage (17 kDa).

Source/Purification: Polyclonal antibodies are produced by immunizing animals with a synthetic peptide (KLH-coupled) corresponding to residues surrounding the cleavage site and the amino terminus of the large fragment of human caspase-3. Antibodies are purified by protein A and peptide affinity chromatography.

Background References:

- (1) Fernandes-Alnemri, T. et al. (1994) *J. Biol. Chem.* 269, 30761–30764.
- (2) Nicholson, D. W. et al. (1995) *Nature* 376, 37–43.

Applications Key: W—Western IP—Immunoprecipitation IHC—Immunohistochemistry ChIP—Chromatin Immunoprecipitation IF—Immunofluorescence F—Flow cytometry E-P—ELISA-Peptide
Species Cross-Reactivity Key: H—human M—mouse R—rat Hm—hamster Mk—monkey Mi—mink C—chicken Dm—D. melanogaster X—Xenopus Z—zebrafish B—bovine
Dg—dog Pg—pig Sc—S. cerevisiae Ce—C. elegans Hr—horse All—all species expected Species enclosed in parentheses are predicted to react based on 100% homology.



Western blot analysis of extracts from *Jurkat* cells, untreated or cytochrome c-treated (in vitro) #9663, showing full length and/or cleaved caspase-3 (upper) and cleaved caspase-3 Asp175 (lower), using **Caspase-3 Antibody #9662** or **Cleaved Caspase-3 (Asp175) Antibody #9661**.

Western blot analysis of extracts from C6 (rat), NIH/3T3 (mouse), and *Jurkat* (human) cells, untreated or treated with staurosporine (1µM, 3hrs) or etoposide (25µM, 5hrs) as indicated, using **Cleaved Caspase-3 (Asp175) (5A1) Rabbit mAb #9664**.

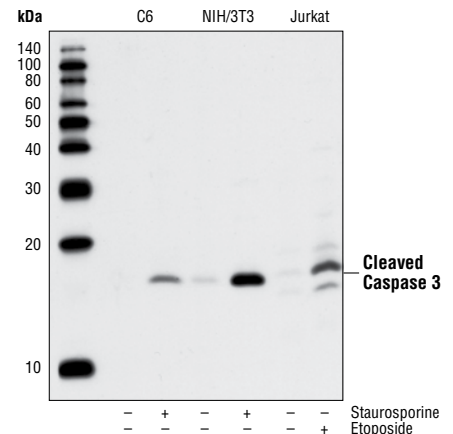
Entrez-Gene ID # 836
UniProt ID # P42574

Storage: Supplied in 10 mM sodium HEPES (pH 7.5), 150 mM NaCl, 100 µg/ml BSA and 50% glycerol. Store at -20°C. Do not aliquot the antibody.

Recommended Antibody Dilutions:

Western blotting 1:1000
See www.cellsignal.com for individual component dilutions and additional application protocols.

Please visit www.cellsignal.com for a complete listing of recommended companion products.



U.S. Patent No. 5,675,063
LumiGLO is a registered trademark of Kirkegaard & Perry Laboratories.

Western Immunoblotting Protocol (Primary Antibody Incubation in Milk)

For Western blots, incubate membrane with diluted antibody in 5% w/v nonfat dry milk, 1X TBS, 0.1% Tween®20 at 4°C with gentle shaking, overnight.

A Solutions and Reagents

NOTE: Prepare solutions with Milli-Q or equivalently purified water.

- 1X Phosphate Buffered Saline (PBS)
- 1X SDS Sample Buffer:** 62.5 mM Tris-HCl (pH 6.8 at 25°C), 2% w/v SDS, 10% glycerol, 50 mM DTT, 0.01% w/v bromophenol blue or phenol red
- Transfer Buffer:** 25 mM Tris base, 0.2 M glycine, 20% methanol (pH 8.5)
- 10X Tris Buffered Saline (TBS):** To prepare 1 liter of 10X TBS: 24.2 g Tris base, 80 g NaCl; adjust pH to 7.6 with HCl (use at 1X).
- Nonfat Dry Milk (weight to volume [w/v])
- Blocking Buffer:** 1X TBS, 0.1% Tween®20 with 5% w/v nonfat dry milk; for 150 ml, add 15 ml 10X TBS to 135 ml water, mix. Add 7.5 g nonfat dry milk and mix well. While stirring, add 0.15 ml Tween®20 (100%).
- Wash Buffer:** 1X TBS, 0.1% Tween®20 (TBS/T)
- Primary Antibody Dilution Buffer:** 1X TBS, 0.1% Tween®20 with 5% nonfat dry milk; for 20 ml, add 2 ml 10X TBS to 18 ml water, mix. Add 1.0 g nonfat dry milk and mix well. While stirring, add 20 µl Tween®20 (100%).
- Phototope®-HRP Western Blot Detection System #7072:** Includes biotinylated protein ladder, secondary anti-mouse (#7076) antibody conjugated to horseradish peroxidase (HRP), anti-biotin antibody conjugated to HRP, LumiGLO® chemiluminescent reagent and peroxide.
- Prestained Protein Marker, Broad Range (Premixed Format) #7720
- Biotinylated Protein Ladder Detection Pack #7727
- Blotting Membrane:** This protocol has been optimized for nitrocellulose membranes, which CST recommends. PVDF membranes may also be used.

B Protein Blotting

A general protocol for sample preparation is described below.

- Treat cells by adding fresh media containing regulator for desired time.
- Aspirate media from cultures; wash cells with 1X PBS; aspirate.
- Lyse cells by adding 1X SDS sample buffer (100 µl per well of 6-well plate or 500 µl per plate of 10 cm diameter plate). Immediately scrape the cells off the plate and transfer the extract to a microcentrifuge tube. Keep on ice.
- Sonicate for 10–15 seconds to shear DNA and reduce sample viscosity.
- Heat a 20 µl sample to 95–100°C for 5 minutes; cool on ice.
- Microcentrifuge for 5 minutes.
- Load 20 µl onto SDS-PAGE gel (10 cm x 10 cm).

NOTE: CST recommends loading prestained molecular weight marker (#7720, 10 µl/lane) to verify electrotransfer and biotinylated protein ladder (#7727, 10 µl/lane) to determine molecular weights.

- Electrotransfer to nitrocellulose or PVDF membrane.

C Membrane Blocking and Antibody Incubations

NOTE: Volumes are for 10 cm x 10 cm (100 cm²) of membrane; for different sized membranes, adjust volumes accordingly.

- (Optional) After transfer, wash nitrocellulose membrane with 25 ml TBS for 5 minutes at room temperature.
- Incubate membrane in 25 ml of blocking buffer for 1 hour at room temperature.
- Wash three times for 5 minutes each with 15 ml of TBS/T.
- Incubate membrane and primary antibody (at the appropriate dilution) in 10 ml primary antibody dilution buffer with gentle agitation overnight at 4°C.
- Wash three times for 5 minutes each with 15 ml of TBS/T.
- Incubate membrane with HRP-conjugated secondary antibody (1:2000) and HRP-conjugated anti-biotin antibody (1:1000) to detect biotinylated protein markers in 10 ml of blocking buffer with gentle agitation for 1 hour at room temperature.
- Wash three times for 5 minutes each with 15 ml of TBS/T.

D Detection of Proteins

- Incubate membrane with 10 ml LumiGLO® (0.5 ml 20X LumiGLO®, 0.5 ml 20X Peroxide and 9.0 ml Milli-Q water) with gentle agitation for 1 minute at room temperature.

NOTE: LumiGLO® substrate can be further diluted if signal response is too fast.

- Drain membrane of excess developing solution (do not let dry), wrap in plastic wrap and expose to x-ray film. An initial 10-second exposure should indicate the proper exposure time.

NOTE: Due to the kinetics of the detection reaction, signal is most intense immediately following LumiGLO® incubation and declines over the following 2 hours.

Tween is a registered trademark of ICI Americas, Inc.

Material Safety Data Sheet (MSDS) for Antibodies

rev. 08/09/07

I. Identification:

Product name: Antibodies

Product Catalog Number: Includes antibodies within the following range of catalog numbers: 2000-5999, 7000-7999 and 9000-9999.

CAS number: None

Manufacturer Supplier: Cell Signaling Technology
3 Trask Lane
Danvers, MA 01923 USA
1-978-867-2300 TEL
1-978-867-2400 FAX
1-978-578-6737 Emergency Phone

II. Composition/Information on Ingredients:

This product is composed of antibodies in aqueous buffer solution. According to 29 CFR 1910.1200(d), hazardous ingredients at less than <1% and carcinogens at less than < 0.1% are considered non-hazardous. Any hazardous or carcinogenic ingredients exceeding these criteria are listed below.

This product may contain the following hazardous ingredients.

Ingredient	CAS#	Percent
Glycerol	56-81-5	50%

III. Hazard Identification:

Emergency Overview of Hazardous ingredient: Glycerol (CAS# 56-81-5)

Caution: Avoid contact and inhalation.

Target Organ: Kidneys.

NFPA Rating:

Health Rating:	1
Flammability Rating:	0
Reactivity Rating:	0

IV. First Aid Measures:

Inhalation: If inhaled, remove to fresh air. If breathing is difficult, get medical attention.

Ingestion: If swallowed and person is conscious, rinse out mouth with water. Get medical attention.

Skin Exposure: In case of contact, wash skin with soap and water.

Eye Exposure: In case of contact with eyes, immediately flush eyes water for at least 15 minutes. Get medical attention.

V. Fire Fighting Measures:

Flash Point: Data not available.

Autoignition Temperature: Data not available.

Fire Extinguishing Media: Water spray, dry chemical, foam, or carbon dioxide.

Firefighting: Wear protective clothing and self-contained breathing apparatus to prevent contact with skin and eyes.

VI. Accidental Release Measures:

Absorb liquid with an absorbent material. Transfer contaminated absorbent to a chemical waste container for disposal.

VII. Handling And Storage:

Avoid inhalation and contact with eyes and skin. Avoid prolonged or repeated exposure. Store at -20°C in tightly closed container.

VIII. Exposure Controls/Personal

Engineering Controls: Maintain adequate ventilation, eye wash and quick-drench facilities in work area.

Personal Protective Equipment: Lab coat, chemical resistant gloves and chemical safety glasses.

Occupational Exposure Limits: Data not available.

IX. Exposure Controls/Personal Protection:

Physical State:	Colorless liquid.
Odor:	Odorless.
Boiling Point:	Data not available.
Melting Point:	Data not available.
Hazardous Organic Compound:	Data not available.
Solubility in water:	Readily miscible in water.

X. Stability and Reactivity:

Stability: Stable.

Hazardous Decomposition: May form carbon dioxide and carbon monoxide.

Conditions to avoid: Strong oxidizing agents

XI. Toxicological Information:

May cause skin irritation.

May be toxic if absorbed through skin or ingested.

May cause eye irritation.

Target Organs: Kidneys

Prolonged exposure may cause nausea, headache, and vomiting.

XII. Ecological Information:

Data not available.

XIII. Disposal Considerations:

Dispose of in accordance with federal, state and local environmental regulations.

XIV. Transport Information:

D.O.T.: This substance is considered non-hazardous for transport.

IATA: This substance is considered non-hazardous for air transport.

XV. Regulatory Information:

EU Regulation/Classification/Labeling Information: Not available for this product.

Chemical Inventory Status:

SARA Listed Component: None.

TSCA Listed Component: None.

Canada (WHMIS): DSL No, NDSL No.

XVI. Other Information:

This compound is sold only for research use by personnel familiar with chemicals and who are well trained in good laboratory habits, such as avoiding spills, keeping hands clean at all times and not rubbing eyes with hands while working in the laboratory.

This solution is sold only in microliter quantities for use in life sciences research. No other use is intended, and any other use may involve substantive hazards.

The above information is believed to be correct but does not purport to be all inclusive and shall be used only as a guide for experienced personnel. Cell Signaling Technology, Inc., shall not be held liable for any damage resulting from the handling of or from contact with the above product. The burden of safe use of this material rests entirely with the user.