

Cleaved Caspase-8 (Asp391) (18C8) Rabbit mAb

Orders ■ 877-616-CELL (2355)

orders@cellsignal.com

Support ■ 877-678-TECH (8324)

info@cellsignal.com

Web ■ www.cellsignal.com

rev. 10/04/19

For Research Use Only. Not For Use In Diagnostic Procedures.

Entrez-Gene ID # 841

UniProt ID # Q14790

Applications	Species Cross-Reactivity*	Molecular Wt.	Isotype
W Endogenous	H	18 kDa, 41 kDa, 43 kDa	Rabbit IgG**

Background: Apoptosis induced by CD95 (Fas/APO-1) and tumor necrosis factor receptor 1 (TNFR1) activates caspase-8 (MACH/FLICE/Mch5), leading to the release of the active fragments, p18 and p10, of caspase-8 (1-3). Activated caspase-8 is able to cleave and activate downstream caspases such as caspase-1, -3, -6 and -7. Caspase-3 ultimately elicits the morphological hallmarks of apoptosis, including DNA fragmentation and cell shrinkage.

Specificity/Sensitivity: Cleaved Caspase-8 (Asp391) (18C8) Rabbit mAb detects human Caspase-8 when cleaved at Asp391 (isoform A, Asp374 on isoform B). This antibody will detect cleavage products containing the pro-domain with the p18 subunit, as well as the p18 subunit alone. A band of unknown origin is detected at 25 kDa in some cell lines.

Source/Purification: Monoclonal antibody is produced by immunizing animals with a synthetic peptide corresponding to residues adjacent to Asp391 of human Caspase-8.

Storage: Supplied in 10 mM sodium HEPES (pH 7.5), 150 mM NaCl, 100 µg/ml BSA, 50% glycerol and less than 0.02% sodium azide. Store at -20°C. Do not aliquot the antibody.

***Species cross-reactivity is determined by Western blot.**

****Anti-rabbit secondary antibodies must be used to detect this antibody.**

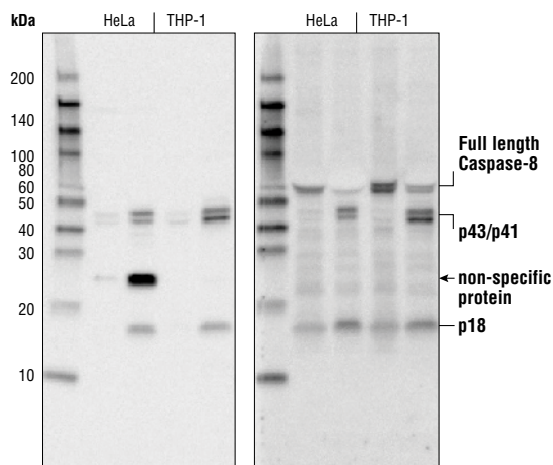
Recommended Antibody Dilutions:

Western blotting 1:1000

For product specific protocols and a complete listing of recommended companion products please see the product web page at www.cellsignal.com.

Background References:

- (1) Muzio, M. et al. (1996) *Cell* 85, 817-827.
- (2) Boldin, M.P. et al. (1996) *Cell* 85, 803-815.
- (3) Fernandes-Alnemri, T. et al. (1996) *Proc. Natl. Acad. Sci. USA* 93, 7464-7469.



Western blot analysis of HeLa and THP-1 cell extracts, untreated (-) or treated with cycloheximide (Chx) #2112 (10 µg/mL, 16 hr) followed by human TNFα (TNFα) #8902 (20 ng/mL, 4hr) using #9496 Cleaved Caspase-8 (Asp391) (18C8) Rabbit mAb (left), or #9746 Caspase-8 (1C12) Mouse mAb (right). A band of unknown origin is detected at 25 kDa in some cell lines.

IMPORTANT: For western blots, incubate membrane with diluted antibody in 5% w/v BSA, 1X TBS, 0.1% Tween®20 at 4°C with gentle shaking, overnight.

U.S. Patent No. 5,675,063

Tween is a registered trademark of ICI Americas, Inc.

Applications Key: W—Western IP—Immunoprecipitation IHC—Immunohistochemistry ChIP—Chromatin Immunoprecipitation IF—Immunofluorescence F—Flow cytometry E-P—ELISA-Peptide

Species Cross-Reactivity Key: H—human M—mouse R—rat Hm—hamster Mk—monkey Mi—mink C—chicken Dm—D. melanogaster X—Xenopus Z—zebrafish B—bovine

Dg—dog Pg—pig Sc—S. cerevisiae Ce—C. elegans Hr—horse

All—all species expected

Species enclosed in parentheses are predicted to react based on 100% homology.