

HTScan® FGF Receptor 1 Kinase Assay Kit

✓ 100 assays
(96 Well Format)

Orders ■ 877-616-CELL (2355)
orders@cellsignaling.com

Support ■ 877-678-TECH (8324)
info@cellsignaling.com

Web ■ www.cellsignaling.com

rev. 09/05/07

This product is for *in vitro* research use only and is not intended for use in humans or animals.

Products Included	Products #	Kit Quantity
Phospho-Tyrosine Mouse mAb (P-Tyr-100)	9411	30 µl
HTScan® Tyrosine Kinase Buffer (4X)	9805	15 ml
ATP (10 mM)	9804	1 ml
DTT (1000X, 1.25 M)		80 µl
PYK2 (Tyr402) Biotinylated Peptide	1315	1.25 ml
FGF Receptor 1 Kinase (recombinant, human)	7730	5 µg

Description: The kit provides a means of performing kinase activity assays with recombinant human FGFR-1 kinase. It includes active FGFR-1 kinase (supplied as a GST fusion protein), a biotinylated peptide substrate and a phospho-tyrosine antibody for detection of the phosphorylated form of the substrate peptide.

Peptide Core Sequence: DIY*AE

Molecular Weights: Peptide substrate, Biotin-Pyk2 (Tyr402): 2,166 Daltons. GST-FGFR-1 Kinase: 78 kDa.

Background: Fibroblast growth factors (FGFs) produce mitogenic and angiogenic effects in target cells by signaling through the cellular surface tyrosine kinase receptors-FGF receptors. There are four members of the FGF receptor family: FGFR-1 (flg), FGFR-2 (bek, KGFR), FGFR-3 and FGFR-4. Each receptor contains an extracellular ligand binding domain, a transmembrane region and a cytoplasmic kinase domain (1). Following ligand binding and dimerization, the receptors are phosphorylated and the receptor tyrosine kinase activated (2), resulting in further activation of various downstream signaling molecules and lysosomal degradation. FGFR has peptide substrate specificity similar to other receptor tyrosine kinase members, preferring acidic residues at the -1 to -4 positions and large hydrophobic amino acids at positions +1 and +3 (3).

Source/Purification: The GST-Kinase fusion protein was produced using a baculovirus expression system with a construct expressing a fragment of human FGFR-1 (Gly400-Arg820) with an amino-terminal GST tag. The protein was purified by one-step affinity chromatography using glutathione-agarose.

Quality Control: The substrate peptide was selected using our Tyrosine Kinase Substrate Screening Kit #7450. Phospho-Tyrosine mAb (P-Tyr-100) #9411 was used for detection. The quality of the biotinylated peptide was evaluated by reverse-phase HPLC and by mass spectrometry.

Purified FGFR-1 kinase was quality controlled for purity by SDS-PAGE followed by Coomassie stain and Western blot. The specific activity of the FGFR-1 kinase was determined using a radiometric assay [Fig.1]. Time course [Fig.2], kinase dose dependency [Fig.3] and substrate dose-dependency [Fig.4] assays were performed to verify FGFR-1 activity using the FGFR-1 substrate peptide provided in this kit. FGFR-1 sensitivity to the inhibitor staurosporine was measured using the FGFR-1 substrate peptide provided in this kit [Fig.5].

Background References:

- (1) powers, C.J. et al. (2000) *Endocr. Relat. Cancer*. 7, 165–197.
- (2) Mohammadi, M. et al. (1996) *Mol. Cell. Biol.* 16, 977–989.
- (3) songyang, Z. and Cantley, L.C. (1995) *TIBS* 20, 470–475.

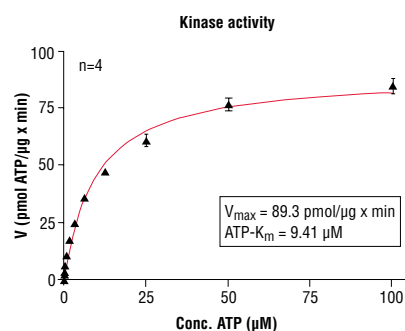


Figure 1. FGFR-1 kinase activity was measured in a radiometric assay using the following reaction conditions: 60 mM HEPES-NaOH, pH 7.5, 3 mM MgCl₂, 3 mM MnCl₂, 3 mM Na-orthovanadate, 1.2 mM DTT, ATP (variable), 2.5 µg/50 µl PEG20,000, Substrate: PolyEY, 5 µg/50 µl, recombinant FGFR-1: 50 ng/50 µl.

Storage: Antibodies are supplied in 10 mM sodium HEPES (pH 7.5), 150 mM NaCl, 100 µg/ml BSA and 50% glycerol. Do not aliquot the antibodies. Peptides are supplied at 6 µM in 0.001% DMSO. Enzymes are supplied in 50 mM Tris-HCL (pH 8.0), 100 mM NaCl, 5 mM DTT, 15 mM reduced glutathione and 20% glycerol. Store at -80°C.

Keep enzymes on ice during use.

Avoid repeated freeze-thaw cycles.

Companion Products:

Tyrosine Kinase Substrate Screening Kit #7450

FGF Receptor 1 Kinase #7730

Phospho-Tyrosine Mouse mAb (P-Tyr-100) #9411

PYK2 (Tyr402) Biotinylated Peptide #1315

Staurosporine #9953

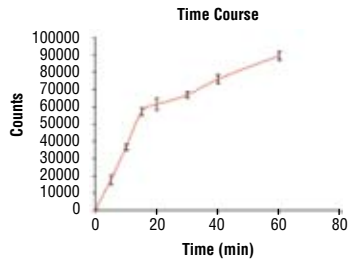


Figure 2. Time course of FGFR-1 kinase activity: DELFIA® data generated using Phospho-Tyrosine mAb (P-Tyr-100) #9411 to detect phosphorylation of FGFR-1 substrate peptide (#1315) by FGFR-1 kinase. In a 50 µl reaction, 50 ng FGFR-1 and 1.5 µM substrate peptide were used per reaction. (DELFIA® is a registered trademark of PerkinElmer, Inc.)

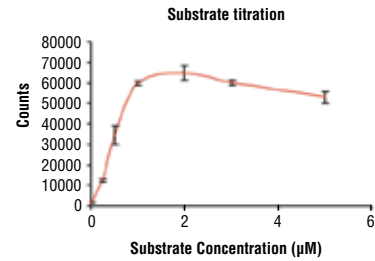


Figure 4. Peptide concentration dependence of FGFR-1 kinase activity: DELFIA® data generated using Phospho-Tyrosine mAb (P-Tyr-100) #9411 to detect phosphorylation of substrate peptide (#1315) by FGFR-1 kinase. In a 50 µl reaction, 50 ng of FGFR-1 and increasing concentrations of substrate peptide were used per reaction at room temperature for 30 minutes. (DELFIA® is a registered trademark of PerkinElmer, Inc.)

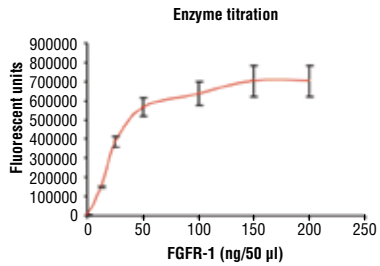


Figure 3. Dose dependence curve of FGFR-1 kinase activity: DELFIA® data generated using Phospho-Tyrosine mAb (P-Tyr-100) #9411 to detect phosphorylation of substrate peptide (#1315) by FGFR-1 kinase. In a 50 µl reaction, increasing amounts of FGFR-1 and 1.5 µM substrate peptide were used per reaction at room temperature for 30 minutes. (DELFIA® is a registered trademark of PerkinElmer, Inc.)

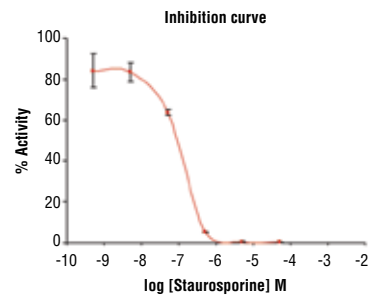


Figure 5. Staurosporine inhibition of FGFR-1 kinase activity: DELFIA® data generated using Phospho-Tyrosine mAb (P-Tyr-100) #9411 to detect phosphorylation of FGFR-1 substrate peptide (#1315) by FGFR-1 kinase. In a 50 µl reaction, 50 ng FGFR-1, 1.5 µM substrate peptide, 20 µM ATP and increasing amounts of staurosporine were used per reaction at room temperature for 30 minutes. (DELFIA® is a registered trademark of PerkinElmer, Inc.)

Protocol for HTScan® FGF Receptor 1 Kinase Assay Kit

Kinase

Note: Lot-specific information for this kinase is provided on the enzyme vial. Optimal assay incubation times and enzyme concentrations must be determined empirically for each lot of kinase under specified conditions.

A Additional Solutions and Reagents (Not included)

1. **Wash Buffer:** 1X PBS, 0.05% Tween-20 (PBS/T)
2. Bovine Serum Albumin (BSA)
3. **Stop Buffer:** 50 mM EDTA pH 8

DELFLIA® is a registered trademark of PerkinElmer Life Sciences

B Suggested Protocol for 100 Assays

1. Add 10 µl 10 mM ATP to 1.25 ml 6 µM substrate peptide. Dilute the mixture with dH₂O to 2.5 ml to make 2X ATP/substrate cocktail ([ATP]=40 µM, [substrate]=3 µM).
2. Immediately transfer enzyme from -80°C to ice. Allow enzyme to thaw on ice.
3. **Microcentrifuge briefly at 4°C to bring liquid to the bottom of the vial. Return immediately to ice.**
4. Add 10 µl of DTT (1.25 M) to 2.5 ml of 4X HTScan® Tyrosine Kinase Buffer (240 mM HEPES pH 7.5, 20 mM MgCl₂, 20 mM MnCl₂, 12 µM Na₃VO₄) to make DTT/Kinase buffer.
5. Transfer 1.2 ml of DTT/Kinase buffer to each enzyme tube to make 4X reaction cocktail ([enzyme] = 4 ng/µL in 4X reaction cocktail).
6. Incubate 12.5 µl of the 4X reaction cocktail with 12.5 µl/well of prediluted compound of interest (usually around 10 µM) for 5 minutes at room temperature.
7. Add 25 µl of 2X ATP/substrate cocktail to 25 µl/well preincubated reaction cocktail/compound.

Final Assay Conditions for a 50 µl Reaction

60 mM HEPES pH 7.5
5 mM MgCl₂
5 mM MnCl₂
3 µM Na₃VO₄
1.25 mM DTT
20 µM ATP
1.5 µM peptide
50 ng FGF Receptor 1 Kinase

8. Incubate reaction plate at room temperature for 30 minutes.
9. Add 50 µl/well Stop Buffer (50 mM EDTA, pH 8) to stop the reaction.
10. Transfer 25 µl of each reaction and 75 µl dH₂O/well to a 96-well streptavidin-coated plate and incubate at room temperature for 60 minutes.
11. *Wash three times with 200 µl/well PBS/T
12. Dilute primary antibody, Phospho-Tyrosine mAb (P-Tyr-100), 1:1000 in PBS/T with 1% BSA. Add 100 µl/well primary antibody.
13. Incubate at room temperature for 60 minutes.
14. *Wash three times with 200 µl/well PBS/T
15. For DELFLIA® or Colorimetric ELISA detection methods please use the following protocols.

DELFLIA® Assay

1. Prepare appropriate dilution of Europium labeled secondary antibody in PBS/T with 1% BSA (1:500 dilution for anti-mouse IgG or 1:1000 for anti-rabbit IgG).
2. Add 100 µl/well secondary antibody solution.
3. Incubate at room temperature for 30 minutes.
4. *Wash five times with 200 µl/well PBS/T.
5. Add 100 µl/well DELFLIA® Enhancement Solution.
6. Incubate at room temperature for 5 minutes.
7. Read plate using a Time Resolved Fluorescent plate reader using the following settings;
 - a. Excitation Filter: 340 nm
 - b. Emission Filter: 615 nm
 - c. Delay**: 400 µs** Delay time is the delay from the excitation pulse to the beginning of the measurement.

Companion Products for DELFLIA®

DELFLIA® Europium-labeled Anti-mouse IgG (PerkinElmer Life Sciences #AD0124)
DELFLIA® Europium-labeled Anti-rabbit IgG (PerkinElmer Life Sciences #AD0105)
DELFLIA® Enhancement Solution (PerkinElmer Life Sciences #1244-105)
DELFLIA® Streptavidin coated, 96-well, yellow plate (PerkinElmer Life Sciences AAAND-0005)

Colorimetric ELISA Assay

1. Prepare appropriate dilution of HRP labeled secondary antibody in PBS/T with 1% BSA (1:500 dilution for anti-mouse IgG or 1:1000 for anti-rabbit IgG).
2. Add 100 µl/well secondary antibody solution.
3. Incubate at room temperature for 30 minutes.
4. *Wash five times with 200 µl/well PBS/T.
5. Add 100 µl/well TMB substrate.
6. Incubate at room temperature for 15 minutes.
7. Add 100 µl/well of stop solution.
8. Mix well.
9. Read the absorbance at 450 nm with a microtiter plate reader.

Companion Products For Colorimetric ELISA Assay

Anti-mouse IgG, HRP Linked Antibody #7076
Anti-rabbit IgG, HRP Linked Antibody #7074
TMB Solution #7004
Stop Solution #7002

* **NOTE:** Use of an automated microplate washer as well as centrifugation of plates when appropriate, greatly improves reproducibility.

Please contact Cell Signaling Technology for HTS-ready antibodies (PBS formulated and carrier-free), and detailed peptide substrate sequence information.
Email: drugdiscovery@cellsignal.com