

PathScan® Mono-Methyl-Histone H3 (Lys4) Sandwich ELISA Kit



Orders ■ 877-616-CELL (2355)
orders@cellsignal.com
Support ■ 877-678-TECH (8324)
info@cellsignal.com
Web ■ www.cellsignal.com

✓ 1 Kit
(96 assays)

rev. 09/01/17

For Research Use Only. Not For Use In Diagnostic Procedures.

Species Cross-Reactivity: H

Description: The PathScan® Mono-Methyl-Histone H3 (Lys4) Sandwich ELISA Kit is a solid phase sandwich enzyme-linked immunosorbent assay (ELISA) that detects endogenous levels of histone H3 when mono-methylated at Lys4. A Total Histone H3 Rabbit mAb has been coated onto the microwells. After incubation with cell lysates, total Histone H3 is captured by the coated antibody. Following extensive washing, biotinylated Mono-Methyl-Histone H3 (Lys4) Rabbit Antibody is added to detect the Mono-Methyl-Histone H3 (Lys4) protein. HRP-linked streptavidin is then used to recognize the bound detection antibody. HRP substrate, TMB, is added to develop color. The magnitude of the absorbance for this developed color is proportional to the quantity of histone H3 mono-methylated at Lys4.

*Antibodies in kit are custom formulations specific to kit.

Specificity/Sensitivity: CST's PathScan® Mono-methyl-Histone H3 (Lys4) Sandwich ELISA Kit #7123 detects endogenous levels of histone H3 when mono-methylated at Lys4. As shown in Figure 1 using the Mono-Methyl-Histone H3 (Lys4) Sandwich ELISA Kit #7123, a high level of mono-methylation at Lys4 on histone H3 is detected in COS cells when treated with TSA. The level of total histone H3 (modified and unmodified) remains unchanged as shown by Western analysis (Figure 1). Similar results are obtained when NIH/3T3 and Jurkat cells are treated with TSA (data not shown).

Background: Modulation of chromatin structure plays an important role in the regulation of transcription in eukaryotes. The nucleosome, made up of four core histone proteins (H2A, H2B, H3 and H4), is the primary building block of chromatin (1). The amino-terminal tails of core histones undergo various post-translational modifications, including acetylation, phosphorylation, methylation and ubiquitination (2-5). These modifications occur in response to various stimuli and have a direct effect on the accessibility of chromatin to transcription factors and, therefore, on gene expression (6). In most species, histone H2B is primarily acetylated at Lys5, 12, 15 and 20 (4,7). Histone H3 is primarily acetylated at Lys9, 14, 18 and 23 (2,3). Acetylation of H3 at Lys9 appears to have a dominant role in histone deposition and chromatin assembly in some organisms (2,3). Phosphorylation at Ser10, Ser28 and Thr11 of histone H3 is tightly correlated with chromosome condensation during both mitosis and meiosis (8-10). Phosphorylation of Thr3 of histone H3 is highly conserved among many species and is catalyzed by the kinase haspin. Immunostaining with phospho-specific antibodies in mammalian cells reveals mitotic phosphorylation of H3 Thr3 in prophase and its dephosphorylation during anaphase (11).

| Product Includes | Item # | Kit Quantity | Color | Storage Temp |
|---|--------|--------------|---------------------|--------------|
| Histone H3 Rabbit mAb Coated Microwells* | 80111 | 96 tests | | 4°C |
| Mono-Methyl-Histone H3 (Lys4) Rabbit Detection mAb (Biotinylated) | 13749 | 1 each | Green (Lyophilized) | 4°C |
| HRP-Linked Streptavidin (ELISA Formulated) | 11805 | 1 each | Red (Lyophilized) | 4°C |
| Detection Antibody Diluent | 13339 | 11 ml | Green | 4°C |
| HRP Diluent | 13515 | 11 ml | Red | 4°C |
| TMB Substrate | 7004 | 11 ml | | 4°C |
| STOP Solution | 7002 | 11 ml | | 4°C |
| Sealing Tape | 54503 | 2 sheets | | 4°C |
| ELISA Wash Buffer (20X) | 9801 | 25 ml | | 4°C |
| ELISA Sample Diluent | 11083 | 25 ml | Blue | 4°C |
| Cell Lysis Buffer (10X) | 9803 | 15 ml | | -20°C |

*12 8-well modules – Each module is designed to break apart for 8 tests.

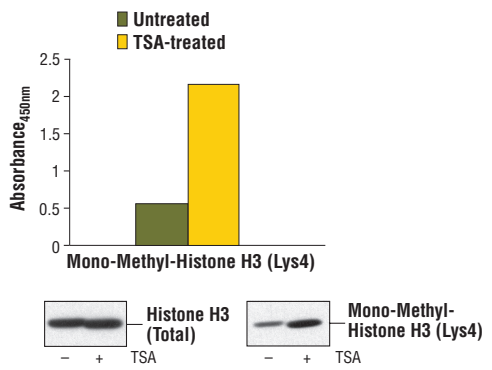


Figure 1. Treatment of COS cells with trichostatin A (TSA) increases the mono-methylation of Histone H3 at Lys4 detected by PathScan® Mono-Methyl-Histone H3 (Lys4) Sandwich ELISA Kit #7123. TSA treatment does not affect the level of histone H3 that is detected by Western analysis. COS cells (70-80% confluent) were treated for 16-18 hours with 0.4 μM TSA at 37°C. Absorbance readings at 450 nm are shown in the top figure while the corresponding Western blots using Histone H3 Antibody #9715 (left panel) or Mono-Methyl-Histone H3 (Lys4) Antibody #9723 (right panel) are shown in the bottom figure.

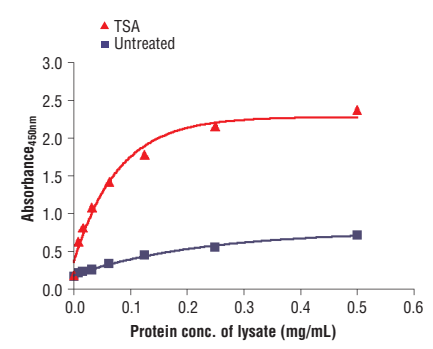


Figure 2. The relationship between the protein concentration of the lysate from untreated and TSA-treated COS cells and the absorbance at 450 nm is shown.

PathScan® Sandwich ELISA Protocol (for kits with Lyophilized Antibodies)

A Solutions and Reagents

NOTE: Prepare solutions with purified water.

- Microwell strips:** Bring all to room temperature before use.
- Detection Antibody:** Supplied lyophilized as a green colored cake or powder. Add 1.0 ml of Detection Antibody Diluent (green solution) to yield a concentrated stock solution. Incubate at room temperature for 5 min with occasional gentle mixing to fully reconstitute. To make the final working solution, add the full 1.0 ml volume of reconstituted Detection Antibody to 10.0 ml of Detection Antibody Diluent in a clean tube and gently mix. Unused working solution may be stored for 4 weeks at 4°C.
- HRP-Linked Antibody*:** Supplied lyophilized as a red colored cake or powder. Add 1.0 ml of HRP Diluent (red solution) to yield a concentrated stock solution. Incubate at room temperature for 5 min with occasional gentle mixing to fully reconstitute. To make the final working solution, add the full 1.0 ml volume of reconstituted HRP-Linked Antibody to 10.0 ml of HRP Diluent in a clean tube and gently mix. Unused working solution may be stored for 4 weeks at 4°C.
- Detection Antibody Diluent:** Green colored diluent for reconstitution and dilution of the detection antibody (11 ml provided).
- HRP Diluent:** Red colored diluent for reconstitution and dilution of the HRP-Linked Antibody (11 ml provided).
- Sample Diluent:** Blue colored diluent provided for dilution of cell lysates.
- 1X Wash Buffer:** Prepare by diluting 20X Wash Buffer (included in each PathScan® Sandwich ELISA Kit) in purified water.
- Cell Lysis Buffer:** 10X Cell Lysis Buffer #9803 or 1X Cell Lysis Buffer #7018: This buffer can be stored at 4°C for short-term use (1–2 weeks). Recommended: Add 1 mM phenylmethylsulfonyl fluoride (PMSF) immediately before use.
- TMB Substrate** (#7004).
- STOP Solution** (#7002).

*Note: Some PathScan® ELISA Kits may include HRP-Linked Streptavidin in place of HRP-Linked Antibody.

B Preparing Cell Lysates

For adherent cells.

- Aspirate media when the culture reaches 80–90% confluence. Treat cells by adding fresh media containing regulator for desired time.
- Remove media and rinse cells once with ice-cold 1X PBS.
- Remove PBS and add 0.5 ml ice-cold 1X Cell Lysis Buffer plus 1 mM PMSF to each plate (10 cm diameter) and incubate the plate on ice for 5 min.
- Scrape cells off the plate and transfer to an appropriate tube. Keep on ice.
- Sonicate lysates on ice.
- Microcentrifuge for 10 min (14,000 rpm) at 4°C and transfer the supernatant to a new tube. The supernatant is the cell lysate. Store at –80°C in single-use aliquots.

For suspension cells

- Remove media by low speed centrifugation (~1200 rpm) when the culture reaches 0.5–1.0 × 10⁶ viable cells/ml. Treat cells by adding fresh media containing regulator for desired time.
- Collect cells by low speed centrifugation (~1200 rpm) and wash once with 5–10 ml ice-cold 1X PBS.
- Cells harvested from 50 ml of growth media can be lysed in 2.0 ml of 1X Cell Lysis Buffer plus 1 mM PMSF.
- Sonicate lysates on ice.
- Microcentrifuge for 10 min (14,000 rpm) at 4°C and transfer the supernatant to a new tube. The supernatant is the cell lysate. Store at –80°C in single-use aliquots.

C Test Procedure

- After the microwell strips have reached room temperature, break off the required number of microwells. Place the microwells in the strip holder. Unused microwells must be resealed and stored at 4°C immediately.
- Cell lysates can be undiluted or diluted with Sample Diluent (supplied in each PathScan® Sandwich ELISA Kit, blue color). Individual datasheets for each kit provide a sensitivity curve that serves as a reference for selection of an appropriate starting lysate concentration. The sensitivity curve shows typical kit assay results across a range of lysate concentration points.
- Add 100 µl of each undiluted or diluted cell lysate to the appropriate well. Seal with tape and press firmly onto top of microwells. Incubate the plate for 2 hr at 37°C. Alternatively, the plate can be incubated overnight at 4°C.
- Gently remove the tape and wash wells:
 - Discard plate contents into a receptacle.
 - Wash 4 times with 1X Wash Buffer, 200 µl each time for each well.
 - For each wash, strike plates on fresh towels hard enough to remove the residual solution in each well, but do not allow wells to completely dry at any time.
 - Clean the underside of all wells with a lint-free tissue.
- Add 100 µl of reconstituted Detection Antibody (green color) to each well (refer to Section A, Step 2). Seal with tape and incubate the plate at 37°C for 1 hr.
- Repeat wash procedure (Section C, Step 4).
- Add 100 µl of reconstituted HRP-Linked secondary antibody (red color) to each well (refer to Section A, Step 3). Seal with tape and incubate the plate for 30 min at 37°C.
- Repeat wash procedure (Section C, Step 4).
- Add 100 µl of TMB Substrate to each well. Seal with tape and incubate the plate for 10 min at 37°C or 30 min at 25°C.
- Add 100 µl of STOP Solution to each well. Shake gently for a few seconds.

NOTE: Initial color of positive reaction is blue, which changes to yellow upon addition of STOP Solution.

- Read results.
 - Visual Determination:** Read within 30 min after adding STOP Solution.
 - Spectrophotometric Determination:** Wipe underside of wells with a lint-free tissue. Read absorbance at 450 nm within 30 min after adding STOP Solution.

Background References:

- Workman, J.L. and Kingston, R.E. (1998) *Annu. Rev. Biochem.* 67, 545–579.
- Hansen, J.C. et al. (1998) *Biochemistry* 37, 17637–17641.
- Strahl, B.D. and Allis, C.D. (2000) *Nature* 403, 41–45.
- Cheung, P. et al. (2000) *Cell* 103, 263–271.
- Bernstein, B.E. and Schreiber, S.L. (2002) *Chem. Biol.* 9, 1167–1173.
- Jaskelioff, M. and Peterson, C.L. (2003) *Nat. Cell Biol.* 5, 395–399.
- Thorne, A.W. et al. (1990) *Eur. J. Biochem.* 193, 701–713.
- Hendzel, M.J. et al. (1997) *Chromosoma* 106, 348–360.
- Goto, H. et al. (1999) *J. Biol. Chem.* 274, 25543–25549.
- Preuss, U. et al. (2003) *Nucleic Acids Res.* 31, 878–885.
- Dai, J. et al. (2005) *Genes Dev.* 19, 472–488.