

# Anti-Rat IgG (H+L), (Alexa Fluor® 488 Conjugate)

✓ 250 µl



**Orders** ■ 877-616-CELL (2355)  
orders@cellsignal.com

**Support** ■ 877-678-TECH (8324)  
info@cellsignal.com

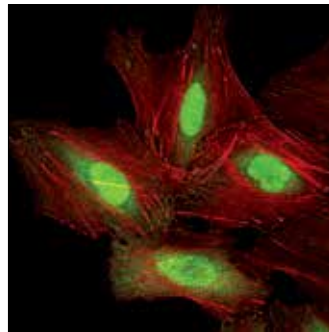
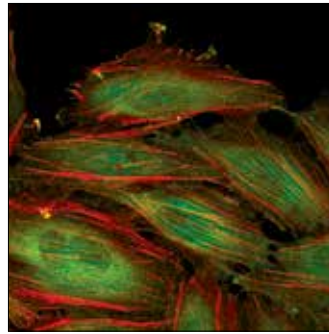
**Web** ■ www.cellsignal.com

rev. 08/04/17

**For Research Use Only. Not For Use In Diagnostic Procedures.**

**Description:** Anti-rat IgG (H+L) antibody was conjugated to Alexa Fluor® 488 fluorescent dye under optimal conditions and formulated at 2 mg/ml. This product has been optimized for use as a secondary antibody in immunofluorescent applications. Cell Signaling Technology's strict quality control procedures assure that each conjugate provides optimal specificity and fluorescence.

**Specificity/Sensitivity:** IgG is prepared from goat antibodies that have been adsorbed against mouse IgG, mouse serum and human serum.



Confocal immunofluorescent analysis of HeLa cells, untreated (upper) or heat shocked (lower), using HSP70 (6B3) Rat mAb #4873 detected with Anti-Rat IgG (H+L), (Alexa Fluor® 488 Conjugate) (green). Actin filaments have been labeled with Alexa Fluor® 555 phalloidin (red).

**Storage:** Supplied in 0.1 M sodium phosphate, 0.1 M sodium chloride, pH 7.5, 5 mM sodium azide. Store at 4°C. *Do not aliquot the antibody. Protect from light. Do not freeze.*

**Directions for Use:** The optimal dilution of the anti-species antibody should be determined for each primary antibody by titration. However, a final dilution shown below should yield acceptable results for immunofluorescent assays:

Immunofluorescent: 1:500 - 1:2000

**For product specific protocols and a complete listing of recommended companion products please see the product web page at [www.cellsignal.com](http://www.cellsignal.com)**