

**#3900**  
 Store at -20°C

# Rabbit (DA1E) mAb IgG XP® Isotype Control



**Orders** ■ 877-616-CELL (2355)  
 orders@cellsignal.com  
**Support** ■ 877-678-TECH (8324)  
 info@cellsignal.com  
**Web** ■ www.cellsignal.com

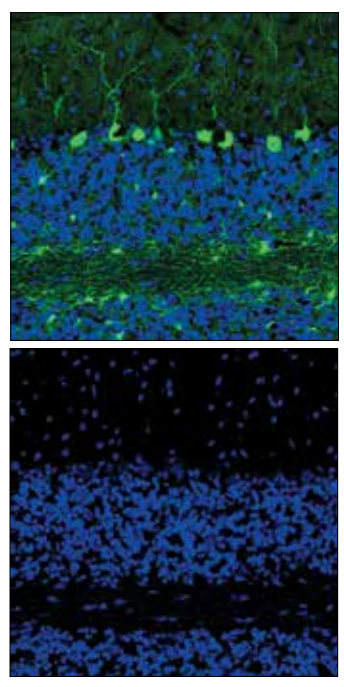
rev. 01/15/16

**For Research Use Only. Not For Use In Diagnostic Procedures.**

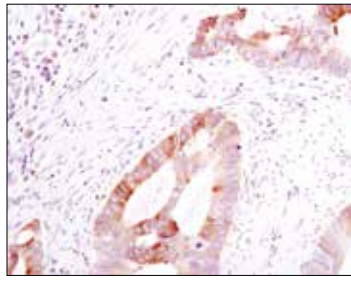
| Applications              | Concentration | Isotype    |
|---------------------------|---------------|------------|
| IHC-P, IF-IC, F, IP, ChIP | 2.5 mg/ml     | Rabbit IgG |

**Background:** Isotype control antibodies are used to estimate the non-specific binding of target primary antibodies due to F<sub>c</sub> receptor binding or other protein-protein interactions. An isotype control antibody should have the same immunoglobulin type and be used at the same concentration as the test antibody.

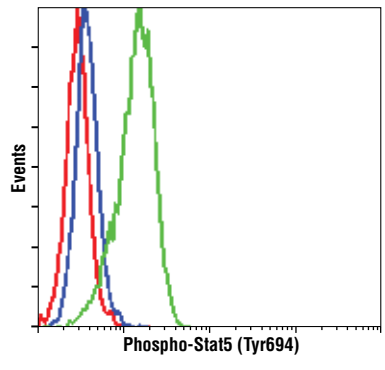
**Specificity/Sensitivity:** Rabbit (DA1E) mAb IgG XP® Isotype Control is not directed against any known antigen. It functions as an isotype control for rabbit IgG monoclonal antibodies.



Confocal immunofluorescent analysis of normal rat cerebellum using DARPP-32 (19A3) Rabbit mAb #2306 (green, upper) compared to concentration matched Rabbit (DA1E) mAb IgG XP® Isotype Control (green, lower). Blue pseudocolor = DRAQ5® #4084 (fluorescent DNA dye).



Immunohistochemical analysis of paraffin-embedded human colon carcinoma using Phospho-S6 Ribosomal Protein (Ser235/236) (D57.2.2E) XP® Rabbit mAb #4858 (upper) compared to concentration matched Rabbit (DA1E) mAb IgG XP® Isotype Control (lower).



Flow cytometric analysis of K-562 cells, STI-treated (blue) or untreated (green), using Phospho-Stat5 (Tyr694) (C71E5) Rabbit mAb #9314 compared to concentration matched Rabbit (DA1E) mAb IgG XP® Isotype Control (red).

**Storage:** Supplied in 10 mM sodium HEPES (pH 7.5), 150 mM NaCl, 100 µg/ml BSA, 50% glycerol and less than 0.02% sodium azide. Store at -20°C. *Do not aliquot the antibody.*

**Note:** This control antibody must be diluted to the same concentration (not dilution) as the specific antibody in analysis. See Directions for Use.

**For application specific protocols please see the web page for this product at [www.cellsignal.com](http://www.cellsignal.com).**

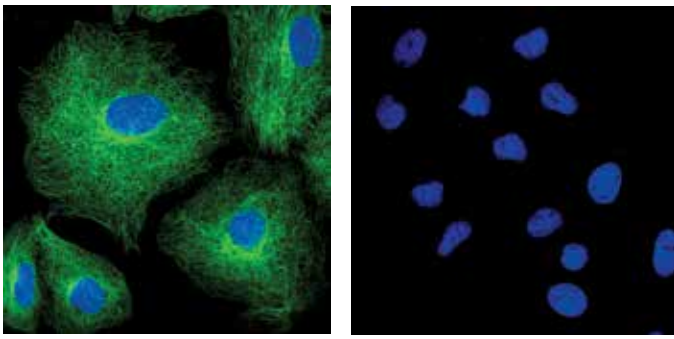
**Directions for Use: Important!** Dilute this control antibody to the same concentration (not dilution) as the specific antibody used for analysis. Higher background may result if excessive amounts of rabbit IgG isotype control is used.

**Please visit [www.cellsignal.com](http://www.cellsignal.com) for a complete listing of recommended companion products.**

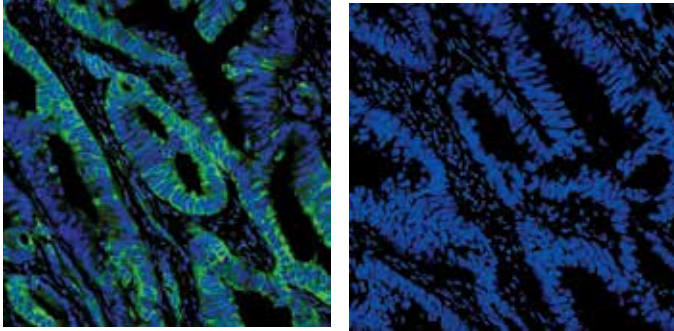
DRAQ5® is a registered trademark of Biostatus Limited.

© 2012 Cell Signaling Technology, Inc.  
 XP®, SimpleChIP® and Cell Signaling Technology® are trademarks of Cell Signaling Technology, Inc.

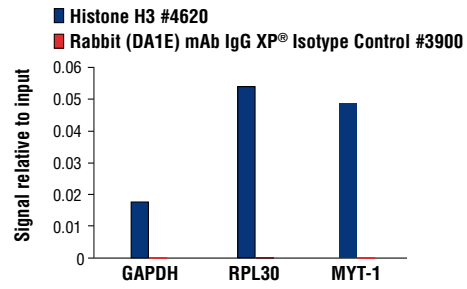
**Applications Key:** W—Western IP—Immunoprecipitation IHC—Immunohistochemistry ChIP—Chromatin Immunoprecipitation IF—Immunofluorescence F—Flow cytometry E-P—ELISA-Peptide  
**Species Cross-Reactivity Key:** H—human M—mouse R—rat Hm—hamster Mk—monkey Mi—mink C—chicken Dm—D. melanogaster X—Xenopus Z—zebrafish B—bovine  
 Dg—dog Pg—pig Sc—S. cerevisiae Ce—C. elegans Hr—horse All—all species expected Species enclosed in parentheses are predicted to react based on 100% homology.



Confocal immunofluorescent analysis of A549 cells using  $\beta$ -Tubulin (9F3) Rabbit mAb #2128 (green, left) compared to concentration matched Rabbit (DA1E) mAb IgG XP<sup>®</sup> Isotype Control (green, right). Blue pseudocolor = DRAQ5<sup>®</sup> #4084 (fluorescent DNA dye).



Confocal immunofluorescent analysis of paraffin-embedded human colon adenocarcinoma using Phospho-S6 Ribosomal Protein (Ser235/236) (D57.2.2E) XP<sup>®</sup> Rabbit mAb #4858 (green, left) compared to concentration matched Rabbit (DA1E) mAb IgG XP<sup>®</sup> Isotype Control (green, right). Blue pseudocolor = DRAQ5<sup>®</sup> #4084 (fluorescent DNA dye).



Chromatin immunoprecipitations were performed using digested chromatin from HeLa cells and the indicated antibodies. Purified DNA was analyzed by quantitative real-time PCR, using SimpleChIP<sup>®</sup> Human GAPDH Exon 1 Primers #5516, SimpleChIP<sup>®</sup> Human RPL30 Exon 3 Primers #7014, and SimpleChIP<sup>®</sup> Human MYT-1 Exon 1 Primers #4493. The relative abundance of each DNA sequence enriched by Rabbit (DA1E) mAb IgG XP<sup>®</sup> Isotype Control (red) is compared to the amount of the same DNA sequence enriched by the histone H3-specific immunoprecipitations (blue).