

Phospho-MDM2 (Ser166) Antibody

Orders ■ 877-616-CELL (2355)
orders@cellsignal.com

Support ■ 877-678-TECH (8324)
info@cellsignal.com

Web ■ www.cellsignal.com

rev. 01/12/16

For Research Use Only. Not For Use In Diagnostic Procedures.

Applications	Species Cross-Reactivity*	Molecular Wt.	Source
W Endogenous	H, M, R	90 kDa	Rabbit**

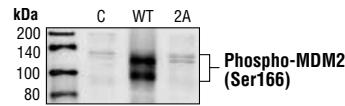
Background: MDM2, a ubiquitin ligase for p53, plays a central role in regulation of the stability of p53 (1). Akt-mediated phosphorylation of MDM2 at Ser166 and Ser186 increases its interaction with p300, allowing MDM2-mediated ubiquitination and degradation of p53 (2-4). Phosphorylation of MDM2 also blocks its binding to p19ARF, increasing the degradation of p53 (3).

Specificity/Sensitivity: Phospho-MDM2 (Ser166) Antibody detects endogenous levels of MDM2 only when phosphorylated at Ser166.

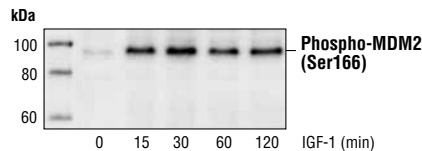
Source/Purification: Polyclonal antibodies are produced by immunizing animals with a synthetic phosphopeptide corresponding to residues surrounding Ser166 of human MDM2. Antibodies are purified by protein A and peptide affinity chromatography.

Background References:

- (1) Haupt, Y. et al. (1997) *Nature* 387, 296–299.
- (2) Mayo, L.D. and Donner, D.B. (2001) *Proc. Natl. Acad. Sci. USA* 98, 11598–11603.
- (3) Zhou, B. P. et al. (2001) *Nat. Cell Biol.* 3, 973–981.
- (4) Grossman, S. R. et al. (1998) *Mol. Cell* 2, 405–415.



Western blot analysis of extracts from COS cells, untransfected or transfected with Wild-type or mutant (S166S186A) MDM2, using Phospho-MDM2 (Ser166) Antibody.



Western blot analysis of extracts from MCF-7 cells treated with IGF-1 for the indicated times, using Phospho-MDM2 (Ser166) Antibody.

Entrez-Gene ID #4193
Swiss-Prot Acc. #Q00987

Storage: Supplied in 10 mM sodium HEPES (pH 7.5), 150 mM NaCl, 100 µg/ml BSA and 50% glycerol. Store at -20°C. Do not aliquot the antibody.

***Species cross-reactivity is determined by western blot.**

****Anti-rabbit secondary antibodies must be used to detect this antibody.**

Recommended Antibody Dilutions:

Western Blotting 1:1000

For application specific protocols please see the web page for this product at www.cellsignal.com.

Please visit www.cellsignal.com for a complete listing of recommended companion products.

IMPORTANT: For western blots, incubate membrane with diluted antibody in 5% w/v BSA, 1X TBS, 0.1% Tween-20 at 4°C with gentle shaking, overnight.

Applications Key: W—Western IP—Immunoprecipitation IHC—Immunohistochemistry ChIP—Chromatin Immunoprecipitation IF—Immunofluorescence F—Flow cytometry E-P—ELISA-Peptide
Species Cross-Reactivity Key: H—human M—mouse R—rat Hm—hamster Mk—monkey Mi—mink C—chicken Dm—D. melanogaster X—Xenopus Z—zebrafish B—bovine
 Dg—dog Pg—pig Sc—S. cerevisiae Ce—C. elegans Hr—Horse All—all species expected Species enclosed in parentheses are predicted to react based on 100% homology.