

IRS-2 (L1326) Antibody

Orders ■ 877-616-CELL (2355)
orders@cellsignal.com

Support ■ 877-678-TECH (8324)
info@cellsignal.com

Web ■ www.cellsignal.com

rev. 01/05/16

For Research Use Only. Not For Use In Diagnostic Procedures.

Applications	Species Cross-Reactivity*	Molecular Wt.	Source
W, IP Endogenous	H, M, R	185 kDa	Rabbit**

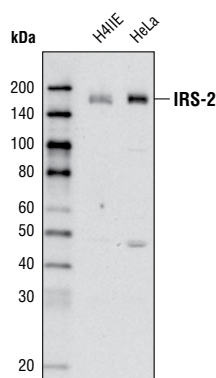
Background: Insulin Receptor Substrate 2 (IRS-2) is one of the major substrates of the insulin receptor kinase (1). In vertebrates, IRS-2 functions as a scaffolding protein to coordinate separate branches of the Insulin/IGF-signaling cascades (2). IRS-2 is essential for normal nutrient homeostasis because it mediates both peripheral insulin action and the effect of IGF-1 on B-cell growth. Mice lacking IRS-2 fail to maintain sufficient compensatory insulin secretion and develop diabetes as young adults (3).

Specificity/Sensitivity: IRS-2 (L1326) Antibody detects endogenous levels of total IRS-2 protein. It does not cross-react with IRS-1.

Source/Purification: Polyclonal antibodies are produced by immunizing animals with a synthetic peptide corresponding to residues surrounding Leu1326 of human IRS-2. Antibodies are purified by protein A and peptide affinity chromatography.

Background References:

- (1) Sun, X. J. et al. (1991) *Nature* 352, 73–77.
- (2) White, M.F. (2002) *Am. J. Phys. Endocrinol. Metab.* 283, E413–E422.
- (3) Withers, D. J. et al. (1998) *Nature* 391, 900–904.



Western blot analysis of H-4-II-E and HeLa cells using IRS-2 (L1326) Antibody.

Entrez-Gene ID #8660
Swiss-Prot Acc. #Q9Y4H2

Storage: Supplied in 10 mM sodium HEPES (pH 7.5), 150 mM NaCl, 100 µg/ml BSA and 50% glycerol. Store at -20°C. Do not aliquot the antibody.

***Species cross-reactivity is determined by western blot.**

****Anti-rabbit secondary antibodies must be used to detect this antibody.**

Recommended Antibody Dilutions:

Western blotting	1:1000
Immunoprecipitation	1:50

For application specific protocols please see the web page for this product at www.cellsignal.com.

Please visit www.cellsignal.com for a complete listing of recommended companion products.

IMPORTANT: For western blots, incubate membrane with diluted antibody in 5% w/v nonfat dry milk, 1X TBS, 0.1% Tween-20 at 4°C with gentle shaking, overnight.

Applications Key: W—Western IP—Immunoprecipitation IHC—Immunohistochemistry ChIP—Chromatin Immunoprecipitation IF—Immunofluorescence F—Flow cytometry E-P—ELISA-Peptide
Species Cross-Reactivity Key: H—human M—mouse R—rat Hm—hamster Mk—monkey Mi—mink C—chicken Dm—D. melanogaster X—Xenopus Z—zebrafish B—bovine
 Dg—dog Pg—pig Sc—S. cerevisiae Ce—C. elegans Hr—horse All—all species expected Species enclosed in parentheses are predicted to react based on 100% homology.