

Parkin Antibody

Orders ■ 877-616-CELL (2355)
orders@cellsignal.com

Support ■ 877-678-TECH (8324)
info@cellsignal.com

Web ■ www.cellsignal.com

rev. 12/17/15

For Research Use Only. Not For Use In Diagnostic Procedures.

Entrez-Gene ID #5071

Swiss-Prot Acc. #O60260

Applications W Endogenous	Species Cross-Reactivity* H, M, R	Molecular Wt. 52 kDa	Source Rabbit**
---------------------------------	--------------------------------------	-------------------------	--------------------

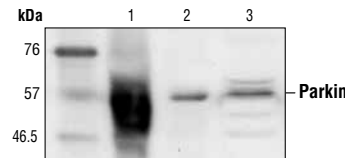
Background: Parkin is a protein of 465 amino acids with an amino-terminal ubiquitin domain and a carboxy-terminal RING-box (1). In the case of autosomal recessive juvenile Parkinsonism (AR-JP), deletions have been found in the gene on chromosome 6 encoding the protein Parkin (2).

Specificity/Sensitivity: Parkin Antibody detects endogenous levels of total parkin protein.

Source/Purification: Polyclonal antibodies are produced by immunizing animals with a synthetic peptide corresponding to residues surrounding amino acid 400 of human parkin. Antibodies are purified by protein A and peptide affinity chromatography.

Background References:

- (1) Tanner, C.M. and Goldman, S.M. (1996) *Neurol. Clin.* 14, 317–335.
- (2) Polymeropoulos, M.H. et al. (1997) *Science* 276, 2045–2047.



Western blot analysis of extracts from parkin-transfected SH-SY5Y cells (lane 1), untransfected SH-SY5Y cells (lane 2) and C6 cells (lane 3), using Parkin Antibody.

Storage: Supplied in 10 mM sodium HEPES (pH 7.5), 150 mM NaCl, 100 µg/ml BSA and 50% glycerol. Store at -20°C. Do not aliquot the antibody.

***Species cross-reactivity is determined by western blot.**

****Anti-rabbit secondary antibodies must be used to detect this antibody.**

Recommended Antibody Dilutions:

Western blotting 1:1000

For application specific protocols please see the web page for this product at www.cellsignal.com.

Please visit www.cellsignal.com for a complete listing of recommended companion products.

IMPORTANT: For western blots, incubate membrane with diluted antibody in 5% w/v BSA, 1X TBS, 0.1% Tween-20 at 4°C with gentle shaking, overnight.

Applications Key: W—Western IP—Immunoprecipitation IHC—Immunohistochemistry ChIP—Chromatin Immunoprecipitation IF—Immunofluorescence F—Flow cytometry E-P—ELISA-Peptide

Species Cross-Reactivity Key: H—human M—mouse R—rat Hm—hamster Mk—monkey Mi—mink C—chicken Dm—D. melanogaster X—Xenopus Z—zebrafish B—bovine

Dg—dog Pg—pig Sc—S. cerevisiae Ce—C. elegans Hr—Horse All—all species expected Species enclosed in parentheses are predicted to react based on 100% homology.