

BackDrop® Green Background Suppressor



✓ 2.5 ml

Orders ■ 877-616-CELL (2355)
orders@cellsignal.com
Support ■ 877-678-TECH (8324)
info@cellsignal.com
Web ■ www.cellsignal.com

rev. 11/07/17

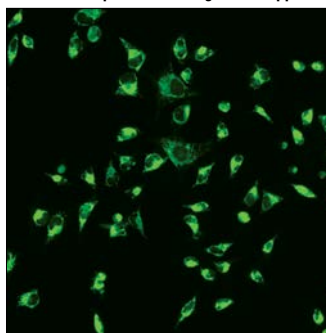
For Research Use Only. Not For Use In Diagnostic Procedures.

Applications
IF-IC **Species Cross-Reactivity**
All

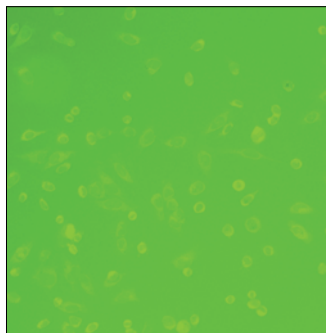
Description: BackDrop® Green Background Suppressor is a novel reagent designed to effectively suppress green background fluorescence and improve live cell image quality, eliminating the need for medium removal and potential cell loss. BackDrop® Green is supplied as a ready-to-use liquid in a convenient dropper bottle and is applied directly to live cell imaging samples.

Background: Background signal from media components can decrease signal-to-noise ratio and result in reduced assay sensitivity. The degree of background suppression with BackDrop® Green can vary depending on the assay, but can often be significant. BackDrop® Green has been shown to improve results when used in conjugation with MitoTracker® Green FM #9074, LysoTracker® Green DND-26 #8783, and ER-Tracker™ Green (BODIPY® FL Glibenclamide) #8787, particularly if phenol red-free media is not used in place of normal media prior to imaging.

With BackDrop® Green Background Suppressor



Medium Alone



Immunofluorescent analysis of live HeLa cells, using MitoTracker® Green FM (#9074) in normal culture medium either with (upper), or without (lower) the addition of BackDrop® Green Background Suppressor

Storage: Store at room temperature. This product is stable for 12 months.

Directions for Use: To eliminate green background fluorescence and improve live cell image quality, apply 2 drops of BackDrop® Green Background Suppressor per 1 ml of media just prior to imaging. Cells should be imaged within 1 hr of application, however longer treatment has not been shown to harm cells.

For product specific protocols please see the web page for this product at www.cellsignal.com.

Please visit www.cellsignal.com for a complete listing of recommended complementary products.